



fitted with
work equipment
connected load
power consumption
luminous flux
luminous efficacy
light distribution
light color
color rendering index (CRI)
system of protection
class of protection
technology
usage
luminaire body
lamp cover
weight (net)
mains supply

design
fastening
dimension

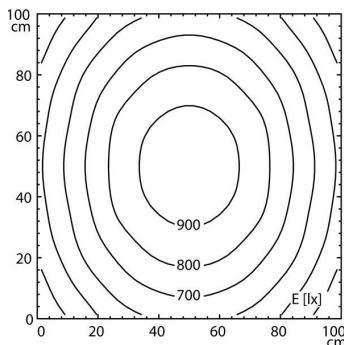
LED
without
20-28V; DC
approx. 23 W
approx. 1670 lm
approx. 72 lm/W
direct, wide-angled beam
neutral white, approx. 5000 K
> 70
IP 65
III
switchable
external
aluminium, anodized, aluminium colored anodized
screen, clear
approx. 1.1 kg (2.42 lb)
built-in plug
M12 4-pole A-coded
mounted version
L-angle, clamp
A=715 mm (28.1 in)



M12 4-pole A-coded

illuminance

distance: 100 cm
Em: 686 lx
Emax: 956 lx
Emin: 385 lx



luminous intensity

