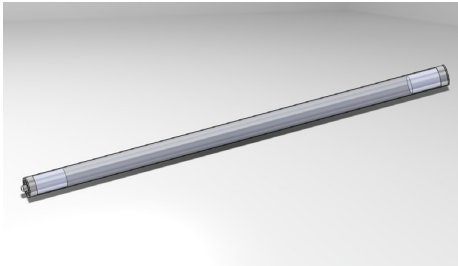


## protective tube luminaire



RL70-1 **20 SX**

connected load  
 fitted with  
 work equipment  
 mains lead  
 luminaire body  
 material  
 weight (net)  
 fastening  
 light distribution  
 system of protection  
 class of protection  
 total length  
 light opening  
 outside diameter  
 end cap style  
 article no.

remote ballast  
 1 x LED LAMP 22W neutral white  
 3300-3700K 2100 lm  
 optional electronic ballast  
 connecting terminal  
  
 acrylic (PMMA); satine  
 approx. 3 kg (6.6 lbs)  
 lamp bracket (accessory)  
 360 degree  
 IP 67  
 I  
 1377 mm (54.2 in)  
 1133 mm (44.6 in)  
 70 mm (2.75 in)  
 A with screwed cable gland  
 R7X-4L0-RRS

