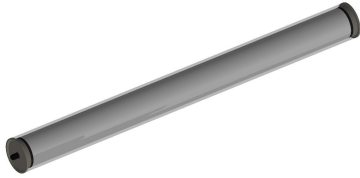


protective tube luminaire



R7H-4SA-SUS

connected load	120-277V; 50/60Hz
fitted with	1 x 26W LED module; 3500 lumens; 3700-4100K
work equipment	dimming LED driver on/off, 0-10V dimming
mains lead	8ft cord, with five wire leads
luminaire body material	PMMA polymer acrylic, satine
weight (net)	approx. 3.1 kg (7.0 lbs)
fastening	different mounting options available
system of protection	IP 67
class of protection	I
total length	1495 mm (58.85")
light output	1228 mm (48.35")
outside diameter	70 mm (2.8")
article no.	A with screwed cable gland R7H-4SA-SUS

