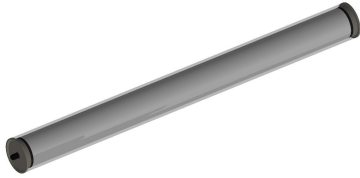


protective tube luminaire



R7H-4SA-DUS

connected load	120-277V; 50/60Hz
fitted with	1 x 26W LED module; 3100 lumens; 3330-3570K
work equipment	dimming LED driver on/off, 0-10V dimming
mains lead	8ft cord, with five wire leads, through-wired
luminaire body material	PMMA polymer acrylic, satine
weight (net)	approx. 3.1 kg (7.0 lbs)
fastening	different mounting options available
system of protection	IP 67
class of protection	I
total length	1495 mm (58.85")
light output	1228 mm (48.35")
outside diameter	70 mm (2.8")
article no.	A with screwed cable gland R7H-4SA-DUS

