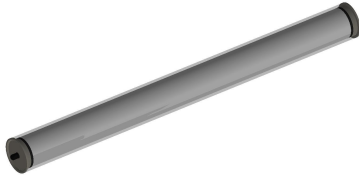


## protective tube luminaire



**R7H-2SA-SUS**

connected load	120-277V; 50/60Hz
fitted with	1 x 13W LED module; 1600 lumens; 3700-4100K
work equipment	dimming LED driver on/off, 0-10V dimming
mains lead	8ft cord, with five wire leads
luminaire body material	PMMA polymer acrylic, satine
weight (net)	approx. 1.8 kg (4.0 lbs)
fastening	different mounting options available
system of protection	IP 67
class of protection	I
total length	886 mm (34.88")
light output	619 mm (24.37")
outside diameter	70 mm (2.8")
article no.	A with screwed cable gland R7H-2SA-SUS

