
IDOO.RAY

POWER OVER ETHERNET (PoE)
DIRECT/INDIRECT WALL LUMINAIRE



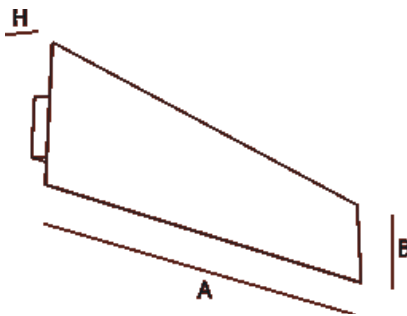
The IDOO.ray contemporary architectural wall fixture is ideal for stairways and hallways, low-lit spaces, with soft, uniform light. Its sleek, narrow silhouette complies with ADA guidelines while the brushed, stainless steel front panel and simple installation allows it to be effortlessly incorporated into any room, office, healthcare facility, etc. with style and harmony. IDOO.ray meets UGR<19 glare control standards and is available in 3500 K and 4000 K temperature and color tuning options.

All models are 1-10V dimmable and ETL/cETL approved. Powered over Ethernet, the IDOO.ray's data is accessed via software and the light's dimming, timing, sensors, light color, and daylight harvesting can all be easily controlled. The Waldmann LUM CONNECT VTL, a biodynamic light system that mimics the changes in sunlight that occur with the course of the day, can also be implemented with this fixture.

wall luminaire ID00.ray



Dimensions

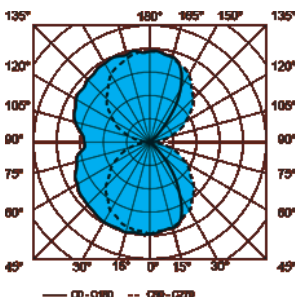


A/B/H (mm)	A/B/H (in)
1250/120/48	49.2/4.7/1.9

fitted with	LED
work equipment	Molex
connected load	PoE
power consumption	approx. 25-50 W
luminous flux	approx. 4000 - 8000 lm
luminous efficacy	approx. 161 lm/W
light distribution	direct/indirect, single circuit
direct ratio	approx. 50 %
light color	3000K, 3500K, 4000K, VTL (2700-5700K)
color rendering index (CRI)	> 80
usage	Molex PoE ready
length	nominal 2ft, 3ft, 4ft
luminaire body	stainless steel, white, black, gray
weight (net)	approx. 3.0 kg (6.6 lbs)
mains lead	hard wired
fastening	wall bracket
special features	Up/Down Light, PoE, single circuit, ETL/cETL approved

RAY	W	ID	Length	CCT	POE	Color
Type	Mounting	Distribution	Length	CCT	Voltage	Color
		Indirect/Direct - ID	(Nominal) - 2 foot - 2 3 foot - 3 4 foot - 4	3000K - 35 3500K - 35 4000K - 40 2700 - 6500K - VTL * *(Only available in 4ft)		Stainless Steel - SS White - W Black - B Gray - G

Luminous Intensity



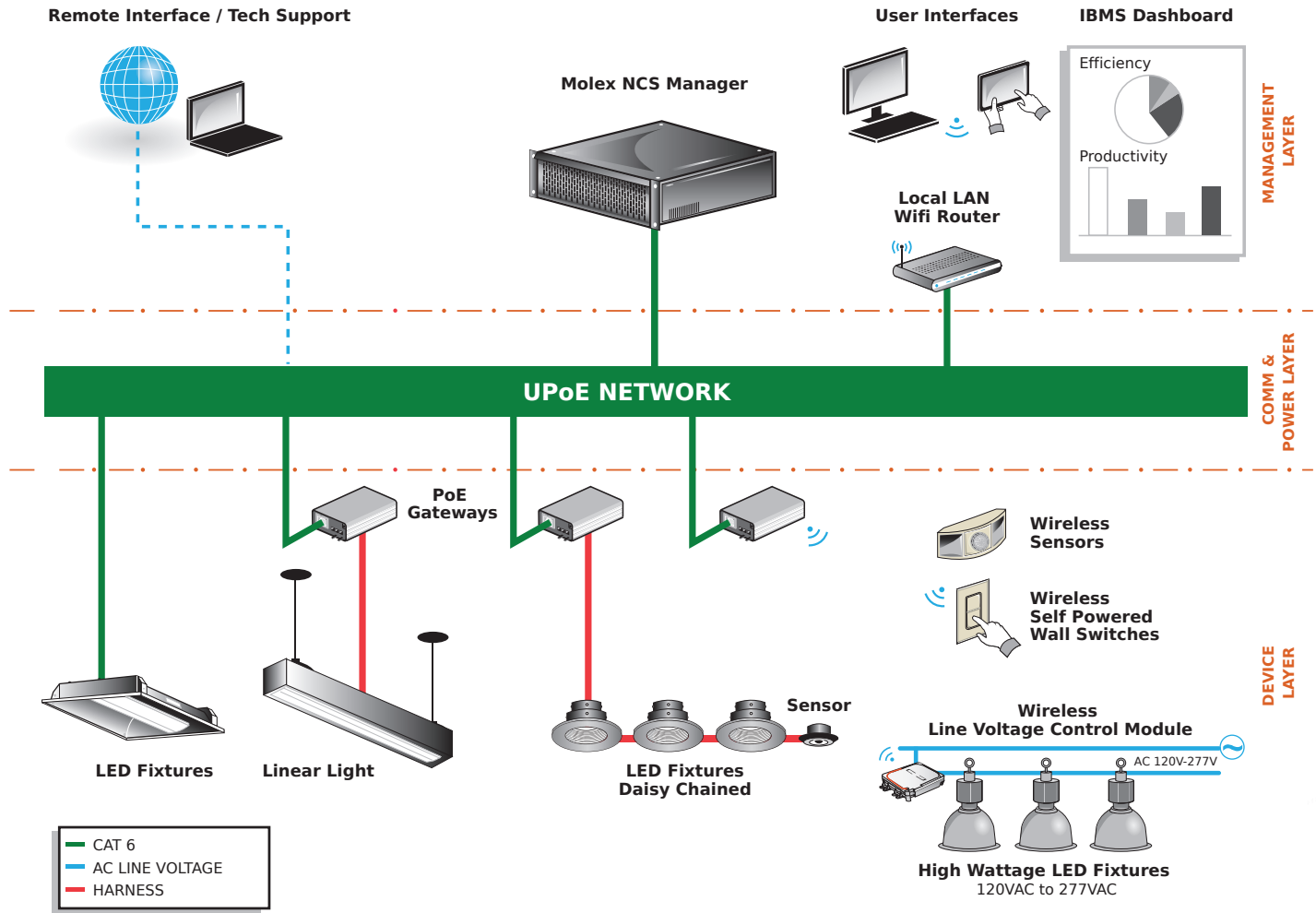
Waldmann Lighting Company

9 W. Century Drive
Wheeling, Illinois 60090
www.waldmannlighting.com

249-07-18

Telephone (847) 520 1060
Fax (847) 520 1730
waldmann@waldmannlighting.com

SYSTEM ARCHITECTURE ▶



WHY PoE LIGHTING?

- Power and data over single-layer infrastructure
- Safe and cost effective to install
- Based on Ethernet standard
- Future proof and upgradable
- Human centric control with tunable luminaires
- Lights can be used to communicate information to users
- Can be integrated with other systems
- Highly secure
- Creates the possibility for new data analytic schemes



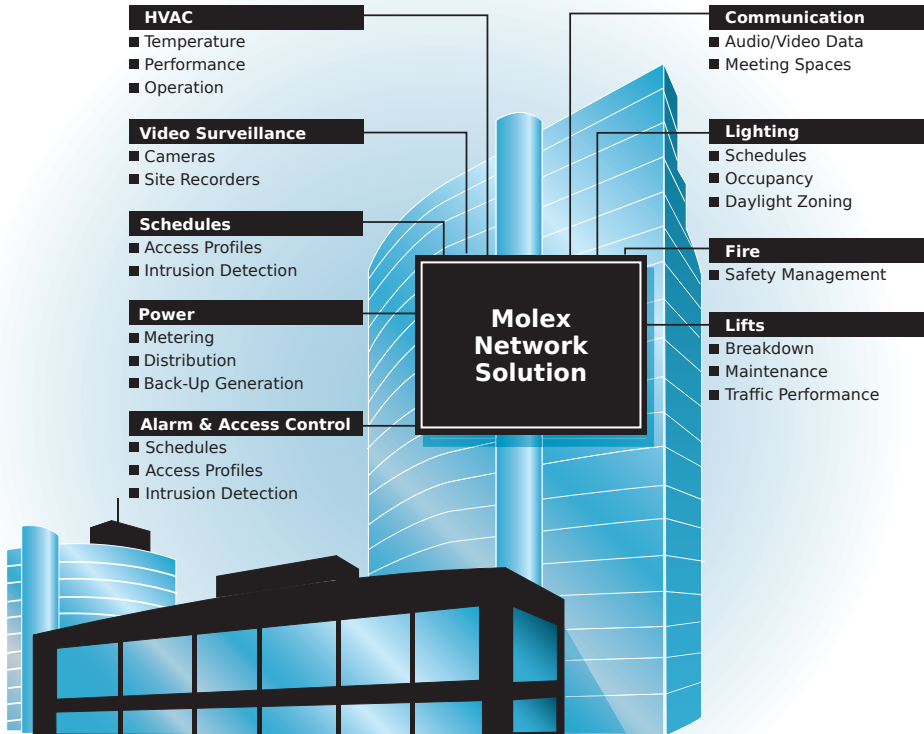
A NEW LIGHTING PARADIGM >

Lighting as a Service for Integrated Smart Buildings

The ability to migrate lighting controls to IP-based infrastructure makes lighting a service and an IoT building asset that can be controlled synergistically along with other building functions.

More integration means not only better control, but also more data and information being collected by a distributed sensor system as part of the lighting network.

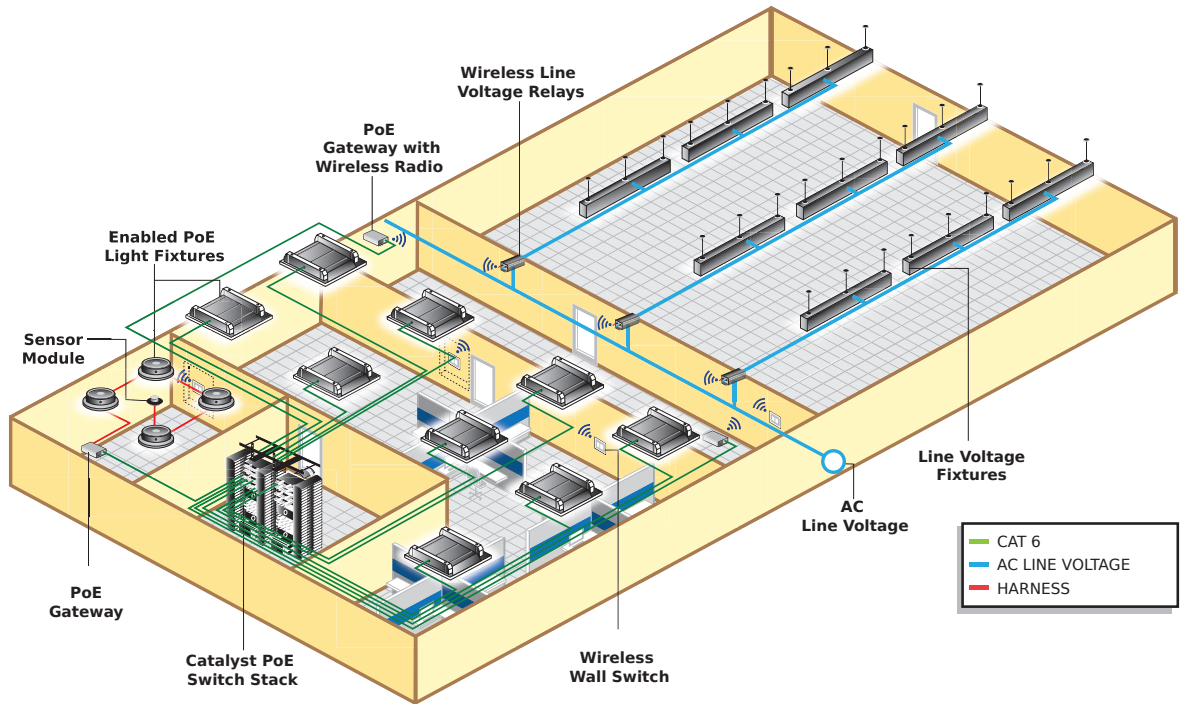
Molex Network Connected Lighting will dramatically accelerate the integration of the IoT into commercial buildings.



WHY MOLEX: Together with leading construction engineering firms, Molex designs and optimizes solutions to improve operational efficiency and performance and to enhance occupant experience and productivity in offices, learning or healthcare facilities, hospitality, retail settings, industrial buildings, and others.

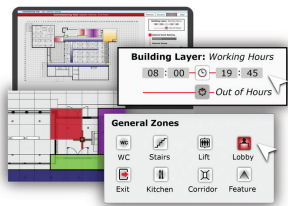
In the important area of LED lighting, we have worked with lighting fixture innovators and leaders, lighting designers and architects to develop connected solutions that define a new level in sustainability, ROI, property value and brand recognition.

SYSTEM ARCHITECTURE >



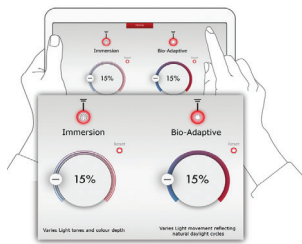
Smart Building Manager

DESIGN



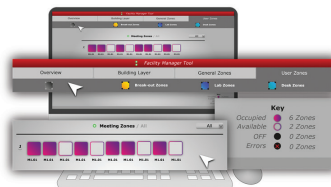
Define spaces
Fixtures
Sensors
Create zones
Schedules

CONTROL



Responsive control
Dynamic scenes
Intuitive user interfaces

MANAGE



Live data feedback
Light status
Building overview
User zones

REPORT



Energy savings
Occupancy status
Building analytics

A FULL SYSTEM SOLUTION WITH THE NCS ALLIANCE >

LIGHTS

The freedom to choose from a large variety of Waldmann NCS-ready lighting fixtures through our Alliance Partnership with the Molex Network Connected Solutions PoE system offers unique flexibility to meet lighting requirements without compromising aesthetics.



GATEWAYS

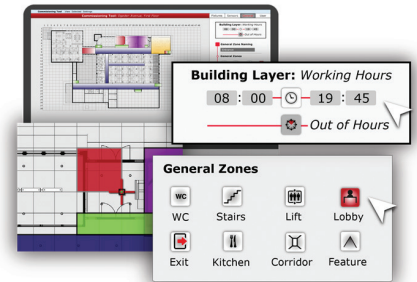
At the heart of the Molex Network Connected System, the PoE Gateway distributes power and connects luminaires, sensors and other devices to the NCS Manager. Each Gateway is connected to a Cisco® switch port with a Category cable, capable of receiving 60 watts using four pairs.

NETWORK EQUIPMENT

As a Cisco® Solution Technology Integrator, Molex integrates Cisco switches into the system.

NCS MANAGER

The Lighting Software Tool-set, leveraging amBX Smart Core technology, provides support during the complete lifecycle of a smart lighting control system, from design and installation to live operation and building maintenance. When compared to traditional methods, the Light Tool-set provides effective lighting in a fraction of the time.



SENSORS

Molex's Lighting Control provides an array of applications that enable the digital building. These applications feed multi-sensor information and data to a central host providing building analytics and applications: real time energy consumption, light status, temperature and humidity, occupancy, air quality, plus many more use cases.



LUX LEVEL



PRESENCE



AIR QUALITY



POWER



COLOR TEMP



ON/OFF



TEMPERATURE & HUMIDITY

Waldmann Lighting Company

9 W. Century Drive
Wheeling, Illinois 60090
www.waldmannlighting.com

Telephone (847) 520 1060
Fax (847) 520 1730
waldmann@waldmannlighting.com

Waldmann **W**

ENGINEER OF LIGHT.