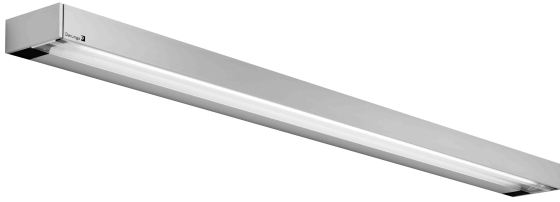


# Mounted luminaire

VANERA LED 60 D15609002

# Waldmann **W**

ENGINEER OF LIGHT.



<b>fitted with</b>	6 x LED module
<b>light distribution</b>	general lighting indirect/direct, dual circuit
<b>Color Rendering Index (CRI)</b>	> 80
<b>color temperature</b>	3000 K
<b>work equipment</b>	electronic converter, low voltage controller
<b>connected load</b>	277V; 50/60Hz
<b>mains lead luminaire</b>	direct power supply
<b>body weight (net)</b>	aluminium
<b>power consumption</b>	3.0 kg (6.6 lbs)
<b>luminous flux</b>	61 W
<b>light yield</b>	4100 lm; 68 lm/W
<b>lamp cover</b>	prismatic profile, PMMA
<b>class of protection</b>	I
<b>norms</b>	EN 60598-1, EN 60598-2-25, ETL/cETL ceiling
<b>fastening</b>	mount, wall mount
<b>glare-free</b>	special wide beam and glare-free technique
<b>system of protection</b>	IP 20
<b>order number</b>	D15609000 - aluminium (anodized)



**Switching sequence:** Momentary switching through low voltage relay only. For single or dual button pillow speaker controls, selectable by dip switch on LVC.

Single Button -  
Push One - Indirect light "on"/ Direct Light "off"  
Push Two - Indirect light "off"/ Direct Light "on"  
Push Three- Both "on"  
Push Four - Both "off"

Dual Button - Individual lamp control.

## light distribution

