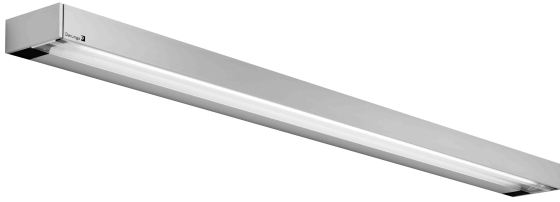


Mounted luminaire

VANERA LED 60 D15609000

Waldmann **W**

ENGINEER OF LIGHT.



fitted with	6 x LED module
light distribution	general lighting indirect/direct, dual circuit
Color Rendering Index (CRI)	> 80
color temperature	3000 K
work equipment	electronic converter, on/off, 0-10V dimmable
connected load	120-277V; 50/60Hz
mains lead	direct power supply
luminaire body	aluminium
weight (net)	3.0 kg (6.6 lbs)
power consumption	61 W
luminous flux	4100 lm
light yield	68 lm/W
lamp cover	prismatic profile, PMMA
class of protection	I
norms	EN 60598-1, EN 60598-2-25, ETL/cETL ceiling
fastening	mount, wall mount
glare-free	special wide beam and glare-free technique
system of protection	IP 20
order number	D15609000 - aluminium (anodized)

Derungs 
LIGHT FOR PEOPLE

light distribution

