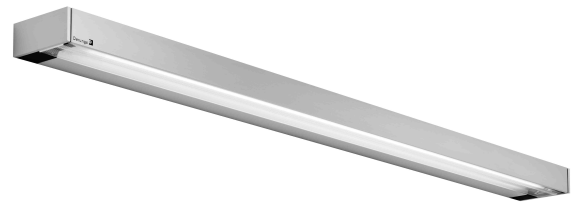


DLite® vanera One 1x39 - D15426000

TECHNICAL DATA

ROOM LIGHTS

FITTED WITH	1 x regular fluorescent lamp T5 39W - D68891000
LIGHT DISTRIBUTION	general lighting indirect/direct
COLOR RENDERING INDEX (CRI)	> 80
COLOR TEMPERATURE	approx. 3000 K
WORK EQUIPMENT	electronic ballast, low voltage controller
CONNECTED LOAD	277V; 50/60 Hz
MAINS LEAD	direct power supply
LUMINAIRE BODY	aluminum
POWER CONSUMPTION	approx. 44 W
LAMP COVER	prismatic profile, PMMA
CLASS OF PROTECTION	I
ACCESSORY	light decor foil
NORMS	EN 60598-1, EN 60598-2-25
SPECIAL FEATURES	front- and side cover aluminum
FASTENING	ceiling mount, wall mount
GLARE-FREE	special wide beam and glare-free technique
SYSTEM OF PROTECTION	IP 20
ORDER NUMBER	D15426000 - aluminum (anodized)



LIGHT DISTRIBUTION

TECHNICAL DRAWING

Wall mounting

