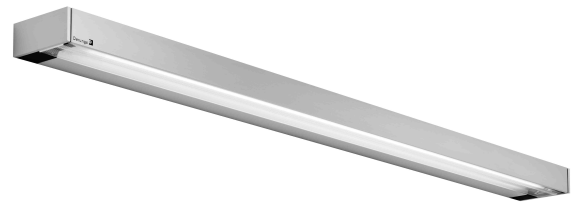


# DLite® vanera One 1x54 - D15387000

## TECHNICAL DATA

## ROOM LIGHTS

FITTED WITH	1 x regular fluorescent lamp T5 54W - D68890000
LIGHT DISTRIBUTION	general lighting indirect/direct
COLOR RENDERING INDEX (CRI)	> 80
COLOR TEMPERATURE	approx. 3000 K
WORK EQUIPMENT	electronic ballast in housing, low voltage controller
CONNECTED LOAD	120V; 50/60 Hz
MAINS LEAD	direct power supply
LUMINAIRE BODY	sectional aluminum
POWER CONSUMPTION	approx. 58 W
LAMP COVER	prismatic profile, PMMA
CLASS OF PROTECTION	I
NORMS	EN 60598-1, EN 60598-2-25
FASTENING	ceiling mount, wall mount
GLARE-FREE	special wide beam and glare-free technique
SYSTEM OF PROTECTION	IP 20
ORDER NUMBER	D15387000 - aluminum (anodized)



## LIGHT DISTRIBUTION

## TECHNICAL DRAWING

### Wall mounting

