

RL70CE - 136 H 619063010-00077590



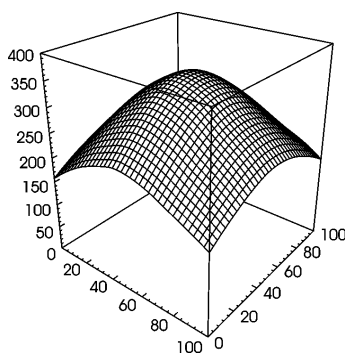
connected load  
fitted with

work equipment  
mains lead  
luminaire body  
material  
weight (net)  
fastening  
light distribution  
system of protection  
class of protection  
total length  
light output  
outside diameter

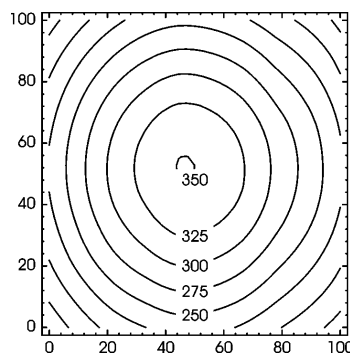
110/230 V; 50/60 Hz  
1 x compact fluorescent lamp TC-L 36 W  
neutral white 4000 K  
electronic ballast\*\*  
connecting terminal

acrylic clear  
approx. 1.4 kg (3.1 lbs)  
lamp bracket (accessory)  
direct  
IP 67  
I  
584 mm (23.0")  
395 mm (15.6")  
70 mm (2.8")  
C with screwed cable gland

\*\* Piggyback ballast (ballast located behind lamps),  
w/ louver; no cable or bracket



E<sub>min</sub>: 157 lx  
E<sub>m</sub>: 256 lx  
E<sub>max</sub>: 350 lx



measuring conditions: d=100cm

