

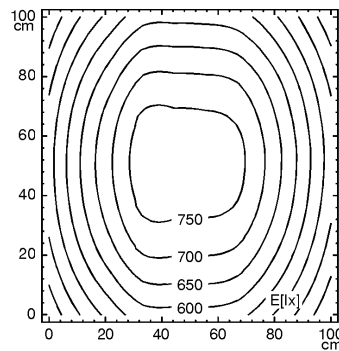
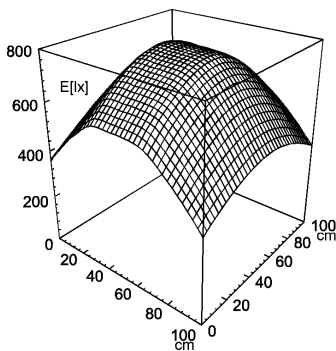
Workplace System Luminaire



SAMC 236

connected load	120 V; 60 Hz
fitted with	2 x compact fluorescent lamp TC-L 36 W neutral white 4000 K
work equipment	conventional ballast
mains lead	approx. 3.0 m (9.8 ft); shock-proof plug
design	236
luminaire body	sectional aluminium
material	paint
surface	approx. 4,6 kg (10.1 lbs)
weight (net)	screw-down bracket; horizontal
fastening	switchable
technology	switch
usage	aluminiumised parabolic louvre
glare-free	I
class of protection	light grey
colour luminaire body	909 mm (35.8")
total length	138427000
article no.	

E_{min}: 350 lx
E_m: 593 lx
E_{max}: 780 lx



measuring conditions: d=100cm

