



fitted with

work equipment
connected load
power consumption
system of protection
class of protection
technology
usage
luminaire body
material
weight (net)
mains lead

design
fastening
dimension
special features

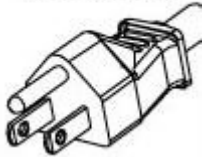
36 x LED
neutral white, 4700-5300 K
Color Rendering Index (CRI)=80
electronic transformer
100-240V; 50/60 Hz
approx. 34 W
IP 20
I
continuously dimmable
switch

sectional anodized aluminum
approx. 4.0 lb. (1.8 kg)
approx. 4.7m (15.4ft); with grounded
3-prong plug

mounted version
screw-down bracket; horizontal
25.9 in. (658 mm)
fixed connection



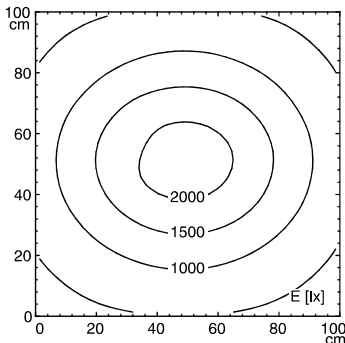
Grounded Plug



illuminance

measuring conditions: d=50cm

Em: 1082 lx
Emax: 2219 lx
Emin: 348 lx



luminous intensity

