



fitted with

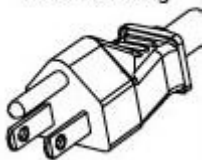
work equipment  
connected load  
power consumption  
system of protection  
class of protection  
technology  
usage  
luminaire body  
material  
weight (net)  
mains lead

design  
fastening  
dimension  
special features

36 x LED  
neutral white, 3800-4300 K  
Color Rendering Index (CRI)=80  
electronic transformer  
100-240V; 50/60 Hz  
approx. 34 W  
IP 20  
I  
continuously dimmable  
switch  
  
sectional anodized aluminum  
approx. 4.0 lb (1.8 kg)  
approx. 4,7m (15.4ft); with grounded 3-  
prong plug  
mounted version  
screw-down bracket; horizontal  
25.9 in. (658mm)  
fixed connection



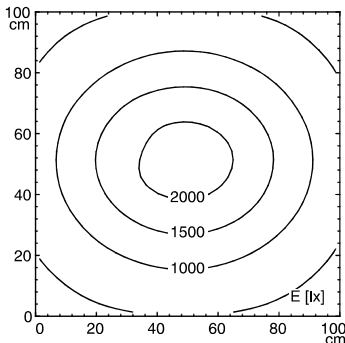
Grounded Plug



**illuminance**

measuring conditions: d=50cm

Em: 1082 lx  
Emax: 2219 lx  
Emin: 348 lx



**luminous intensity**

