



light source
work equipment
voltage
power consumption
luminous flux
luminous efficacy
color temperature
color rendering index (CRI)
glare control
system of protection
operation
luminaire body
weight (net)
voltage
mounting

LED
electronic transformer
100-240 V; 50/60 Hz
approx. 18 W
approx. 1400 lm
approx. 77 lm/W
neutral white, approx. 4000 K
> 80
conical prismatic lens
IP20
rocker switch
anodized aluminum/plastic
approx. 5.3 lbs (2.4 kg)
10 ft (3 m) w/ NEMA 5-15 bracket
bracket

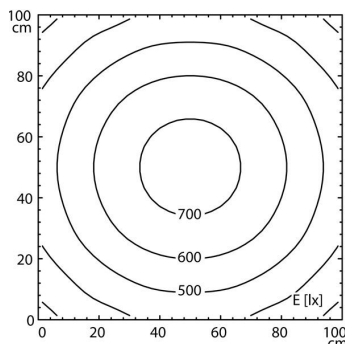


NEMA 5-15

illuminance

distance: 100 cm

Em: 532 lx
Emax: 733 lx
Emin: 315 lx



luminous intensity

