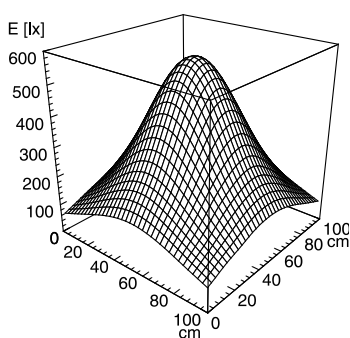


## LED machine luminaire

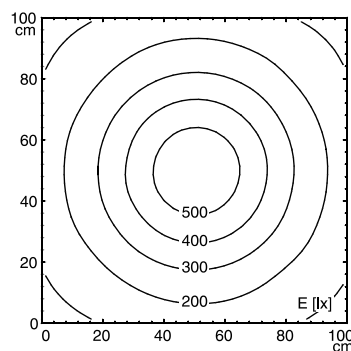


### MACH LED PRO - MUEL 1 S

FITTED WITH	1 x Light-emitting diode 6 W
WORK EQUIPMENT	without
CONNECTED LOAD	24 V, 50/60 Hz
POWER CONSUMPTION	approx. 5 W
SYSTEM OF PROTECTION	IP 67
CLASS OF PROTECTION	III
TECHNOLOGY	switchable
USAGE	without switch
LUMINAIRE BODY	
MATERIAL	aluminium
SURFACE	anodised
LAMP COVER	screen, clear
WEIGHT (NET)	approx. 0.4 kg
MAINS LEAD	approx. 3.0 m, with free stranded wires
DESIGN	integrated version
FASTENING	screws
TOTAL LENGTH	220 mm
GLARE-FREE	without
SPECIAL FEATURES	integrated version
ARTICLE NO.	112571003-00085194



E<sub>min</sub>: 85 lx  
 E<sub>m</sub>: 261 lx  
 E<sub>max</sub>: 560 lx



measuring conditions: d=50cm, BIN=N1

