

Machine Tube Luminaire

RL70CE-118 112370000-00084157

ENGINEER OF LIGHT.



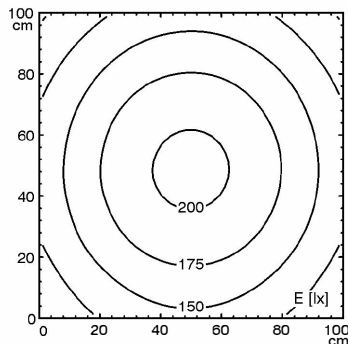
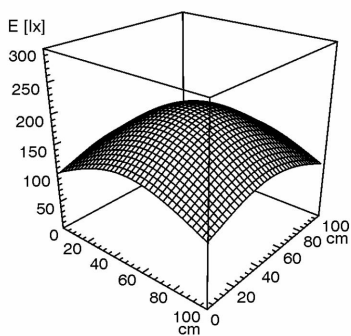
connected load
fitted with

work equipment
mains lead
luminaire body
material
weight (net)
fastening
light distribution
system of protection
class of protection
total length
light output
outside diameter

24 V; DC
1 x compact fluorescent lamp TC-L 18 W
neutral white 4000 K
electronic ballast
connecting terminal

acrylic clear
approx. 1.4 kg (3.1 lbs)
lamp bracket (accessory)
direct
IP 67
I
524 mm (20.6")
212 mm (8.4")
70 mm (2.8")
C with screwed cable gland

E_{min}: 108 lx
E_m: 159 lx
E_{max}: 205 lx



measuring conditions: d=100cm

