

Machine Tube Luminaire



RL70CE - 124

connected load
fitted with

work equipment
mains lead
luminaire body
material
weight (net)
fastening
light distribution
system of protection
class of protection

total length
light output
outside diameter
article no.

24 V; DC

1 x compact fluorescent lamp TC-L 24 W
neutral white 4000 K

electronic ballast
connecting terminal

borosilicate glass
approx. 2,3 kg (5.1 lbs)
lamp bracket (accessory)

direct

IP 67

I

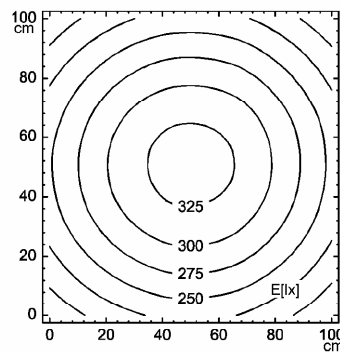
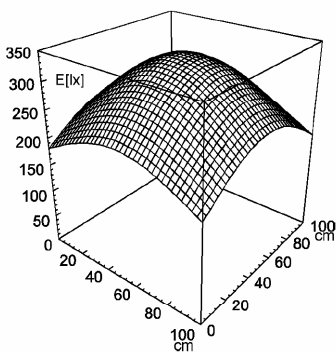
600 mm (23.6")

317 mm (12.5")

70 mm (2.8")

111440012

E_{min}: 178 lx
E_m: 259 lx
E_{max}: 333 lx



measuring conditions: d=100cm

