

Machine Tube Luminaire



RL70 - 136 S

connected load
fitted with

work equipment
mains lead
luminaire body
material
weight (net)
fastening
light distribution
system of protection
class of protection
total length
light output
outside diameter

article no.

depends on the ballast

1 x fluorescent lamp T8 36 W
neutral white 4000 K

connection to a separate electronic ballast

connecting terminal

borosilicate glass (shown with optional louver)

approx. 4.0 kg (8.8 lbs)

lamp bracket (accessory)

direct

IP 67

I

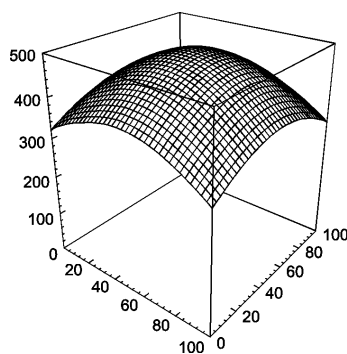
1362 mm (53.6")

1200 mm (47.2")

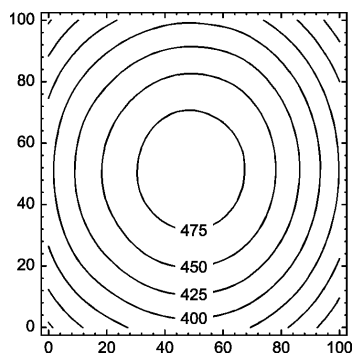
70 mm (2.8")

A with screwed cable gland

108710001



E_{min}: 303 lx
E_m: 410 lx
E_{max}: 490 lx



measuring conditions: d=100cm

