

## Machine Tube Luminaire



**RL70 - 136 S**

connected load  
fitted with

work equipment  
mains lead  
luminaire body  
material  
weight (net)  
fastening  
light distribution  
system of protection  
class of protection  
total length  
light output  
outside diameter

article no.

depends on the ballast  
1 x fluorescent lamp T8 36 W  
neutral white 4000 K  
connection to a separate electronic ballast  
connecting terminal

acrylic clear (shown with optional louver)  
approx. 3,8 kg (8.4 lbs)  
lamp bracket (accessory)

direct  
IP 67

I

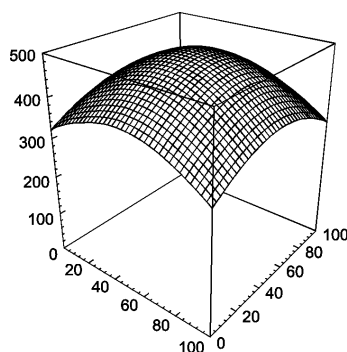
1362 mm (53.6")

1200 mm (47.2")

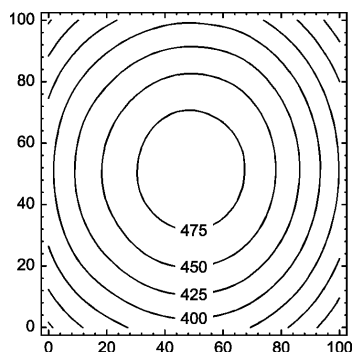
70 mm (2.8")

A with screwed cable gland

108710000



E<sub>min</sub>: 303 lx  
E<sub>m</sub>: 410 lx  
E<sub>max</sub>: 490 lx



measuring conditions: d=100cm

