

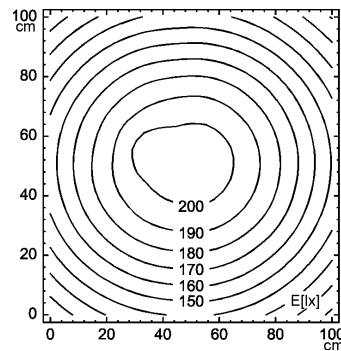
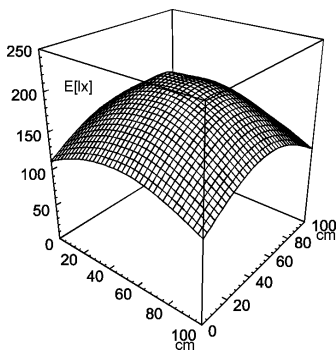
## Machine Tube Luminaire



**RL70CV - 118**

connected load	120 V; 60 Hz
fitted with	1 x compact fluorescent lamp TC-L 18 W neutral white 4000 K
work equipment	conventional ballast
mains lead	2,4 m (8 ft) cordset
luminaire body material	borosilicate glass
weight (net)	approx. 2,7 kg (6.0 lbs)
fastening	lamp bracket
light distribution	direct
system of protection	IP 67
class of protection	I
total length	447 mm (17.6")
light output	198 mm (7.8")
outside diameter	70 mm (2.8")
article no.	108500M01

E<sub>min</sub>: 108 lx  
E<sub>m</sub>: 160 lx  
E<sub>max</sub>: 205 lx



measuring conditions: d=100cm

