

## machine tube luminaire #108500001-00054029



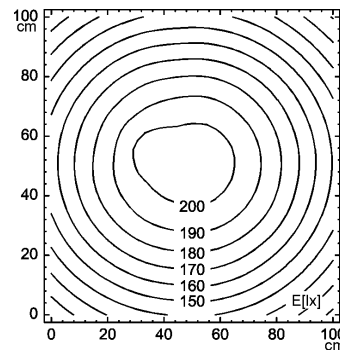
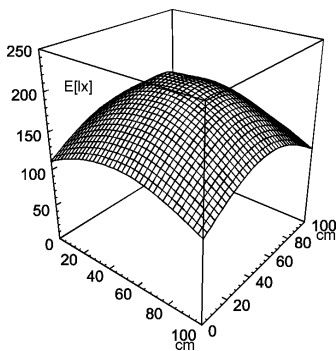
**RL70CV - 118**

connected load  
fitted with

work equipment  
mains lead  
luminaire body  
material  
weight (net)  
fastening  
light distribution  
system of protection  
class of protection  
total length  
light output  
outside diameter

120 V; 60 Hz  
1 x compact fluorescent lamp TC-L 18 W  
neutral white 4000 K  
conventional ballast  
connecting terminal  
  
borosilicate glass  
approx. 2,7 kg (6.0 lbs)  
lamp bracket (accessory)  
direct  
IP 67  
I  
447 mm (17.6")  
198 mm (7.8")  
70 mm (2.8")  
A with screwed cable gland (not shown)

E<sub>min</sub>: 108 lx  
E<sub>m</sub>: 160 lx  
E<sub>max</sub>: 205 lx



measuring conditions: d=100cm

