

RL70 EP Series



Applications: The RL70 Series of linear fluorescent tubular luminaires offers an ideal solution for a variety of lighting applications from rugged, large scale, outdoor installations, to sophisticated, intricately designed interior décor. The RL70 Series are compatible with almost all dimming control systems, and can be configured with a variety of T5 and T8 lamp options, as well as electronic ballasts mounted inside the luminaire or remotely. A variety of mounting options are available for endless design possibilities and ease of installation and maintenance of energy-efficient lighting solutions.

Part #		Type
Project		
Comments		Date
Prepared by		

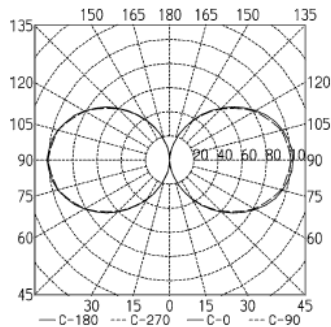
Sample Number: RL70EP - E - 32 - 120 - S - 41 - N

.....kO -h'

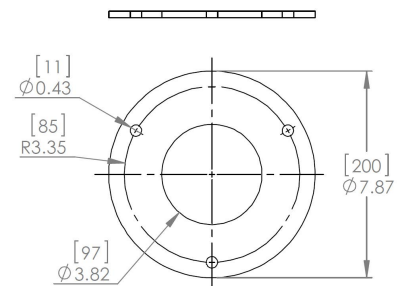
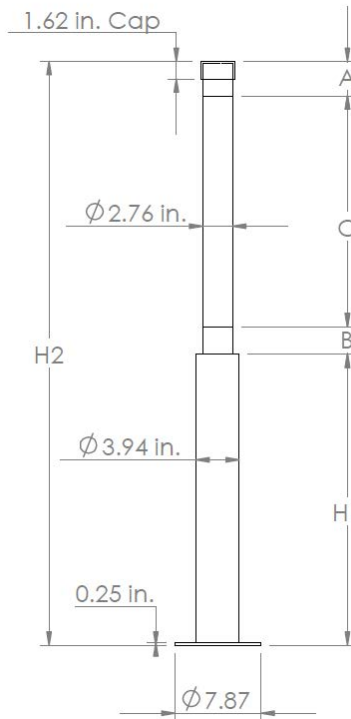
RL70-h	"	ü	O	Voltage	Tube Color	Color Temp.	Cord (ft.) or (N)one

TECHNICAL SPECS:

- Voltage:** 120-277 V, 50/60 Hz
- Lamp Technology:** 1 x Fluorescent T5, T5HO, or T8
- Ballast:** Standard Electronic, Integrated or Remote Optional Dimming
- Waterproof:** IP 67 protection
- Tube:** PMMA Polymer Acrylic; Clear or Satine
- Light Distribution:** 360°
- Cable Gland:** located at end cap, sealed with "O" ring
- Cord:** Optional, not included
- Dimensions:** Ø70 mm (2.8 in); length varies by lamp type
- Safety:** ETL/cETL



Shown for 32 W T8
Complete IES files available at
www.waldmannlighting.com



Mounting Base Template
(Not to scale)

Total Height (H2)	Illuminated (C)	Non-Illuminated		Base (H1)
		(A)	(B)	
		187.3 mm (7.3 in)	187.3 mm (7.3 in)	673.0 mm (26.5 in)