

# MACH LED

## HIGH OUTPUT LINEAR LED



End Cap A



Lens 30°



\*End Cap B



Reflector 50°

### PRODUCT DESCRIPTION:

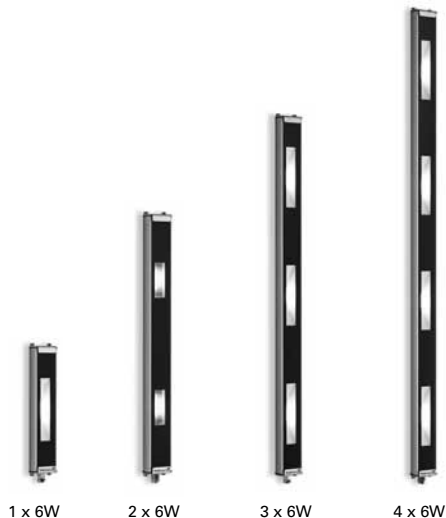
Utilizing state-of-the-art LED chip technology, MACH LED produces intense illumination for the most demanding industrial applications. The MACH LED is a completely waterproof (IP67) linear LED luminaire that offers precise light positioning and adjustability. The luminaire body is an extruded aluminum housing with ridges designed for effective heat dissipation. MACH LED provides outstanding illumination levels in a compact, easy-to-install package with both fixed and adjustable mount-

ing options available. The luminaire is available in four different lengths from 7 inches (182mm) to 28 inches (707mm), as well as up to four LED modules in one housing. Two different beam angles are available: a 30° or 50° optic providing either spot or flood light beam distribution. The rugged aluminum housing can be used in both interior and exterior applications. The tempered glass lens is designed to withstand debris and is sealed with NPR gasketing to insure a completely waterproof luminaire. MACH LED is designed for years of maintenance-free operation.

### FEATURES & BENEFITS:

- Small, compact linear housing
- High-performance LED technology
- 50,000 hours maintenance-free operation
- Different beam angles of 30° or 50°
- Low-voltage 24V AC or DC operation
- Waterproof (IP67)
- High resistance to coolants/lubricants
- Impervious to mechanical vibration
- Rugged aluminum housing
- Lengths: 7in (182mm), 14in (357mm), 21in (532mm), and 28in (707mm)

## PRODUCT INFORMATION



1 x 6W

2 x 6W

3 x 6W

4 x 6W

MACH LED

Voltage:

24V AC or DC

Lamping:

6W LED chip-array

Operation:

No integral switch, connect to external switch

Luminaire Body:

Anodized aluminum

Lens Cover:

4mm thick borosilicate safety glass

Protection Rating:

IP67

Beam Angles:

30° or 50°

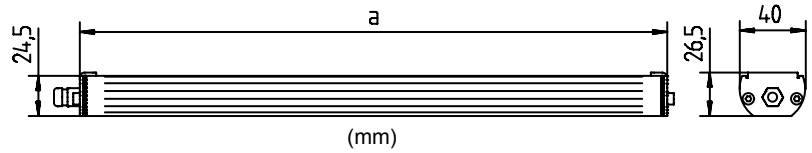
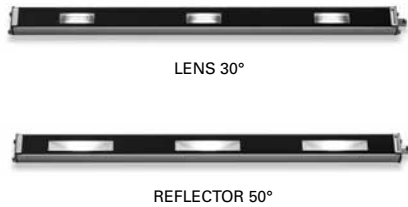
Luminaire Color:

Silver housing, black facing

Cord Length:

10ft (3m)

## ORDERING INFORMATION

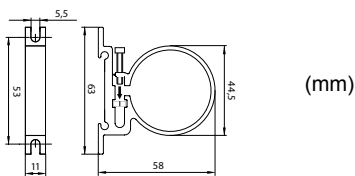


\*END CAP "B" INCLUDES SCREW-DOWN FLANGE (see picture on page 3)

LAMPING	LENGTH (dimension "a" in drawing)	BEAM ANGLE	*END CAP (A or B)	MODEL	PART # (DC)	PART # (AC)
	7.17in (182mm)	30°	A	MTAL 1 S	112 567 000	112 567 001
		30°	B	MTAL 1 S	112 567 002	112 567 003
		50°	A	MTAL 1 S	112 567 004	112 567 005
		50°	B	MTAL 1 S	112 567 006	112 567 007
	14.05in (357mm)	30°	A	MTAL 2 S	112 567 010	112 567 011
		30°	B	MTAL 2 S	112 567 012	112 567 013
		50°	A	MTAL 2 S	112 567 014	112 567 015
		50°	B	MTAL 2 S	112 567 016	112 567 017
	20.95in (532mm)	30°	A	MTAL 3 S	112 567 020	112 567 021
		30°	B	MTAL 3 S	112 567 022	112 567 023
		50°	A	MTAL 3 S	112 567 024	112 567 025
		50°	B	MTAL 3 S	112 567 026	112 567 027
	27.83in (707mm)	30°	A	MTAL 4 S	112 567 030	112 567 031
		30°	B	MTAL 4 S	112 567 032	112 567 033
		50°	A	MTAL 4 S	112 567 034	112 567 035
		50°	B	MTAL 4 S	112 567 036	112 567 037

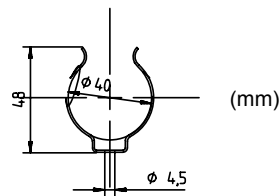
## ACCESSORIES

### MOUNTING RING KIT (INCLUDES 2 MOUNTING RINGS)



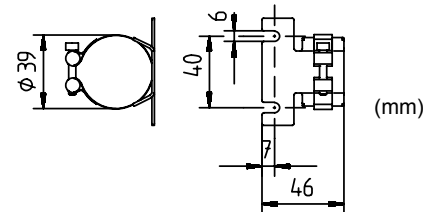
Material: Aluminum  
Part #: 408 001 952

### MOUNTING CLIP (SOLD INDIVIDUALLY)



Material: Stainless Steel  
Part #: 306 266 022

### MOUNTING STRAP (SOLD INDIVIDUALLY)



Material: Stainless Steel  
Part #: 190 174 029

## EXTERNAL OPERATING DEVICES

Required for 120-277V operation

MAX WATTAGE	OUTPUT	VOLTAGE RANGE	PART #
20W	24V DC	120-240V, 50/60Hz	209 585 029
50W	24V DC	120V, 50/60Hz	209 585 030
75W	24V DC	120-277V, 50/60Hz	209 585 031