

# Dmed® Max 35 SX - D14290130

## TECHNICAL DATA

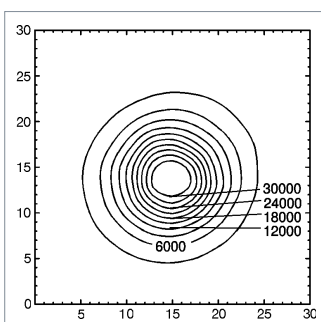
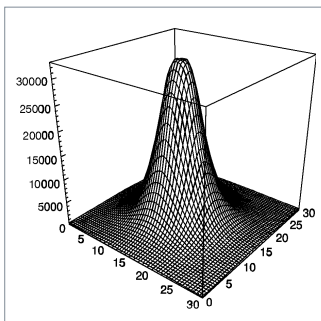
## EXAMINATION LIGHTS

FITTED WITH	1 x halogen lamp QR-CBC51 35 W - D68730000
LUMINOUS POWER	32 000 Lux / 0,5 m (19.7")
WORK EQUIPMENT	electronic plug-in transformer
CONNECTED LOAD	120 V; 50/60 Hz
MAINS LEAD	approx. 3 m cordset with plug-in transformer
LUMINAIRE BODY	polyamide (PA)
WEIGHT (NET)	approx. 1,8 kg (4.0 lbs)
POWER CONSUMPTION	approx. 40 W
USAGE	rocker switch (I/O)
TECHNOLOGY	single-pole primary
CLASS OF PROTECTION	II
NORMS	EN 60601-1, EN 60601-2-41
FASTENING	wall mount and extension arm included (not shown)
ORDER NUMBER	D14290130 - pure white



## LIGHT DISTRIBUTION

## TECHNICAL DRAWING



Dimensions in cm.

