

# Dcare® cosy 20 P S3 - D13821150

## TECHNICAL DATA

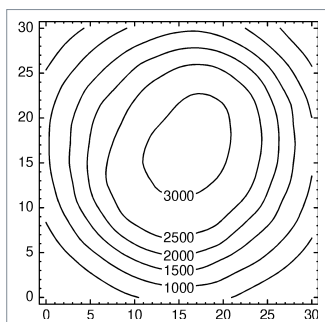
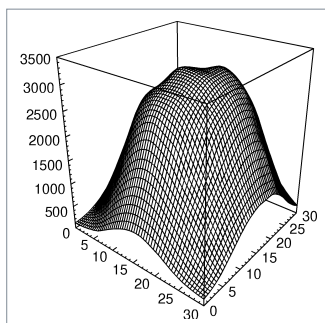
## CARE AND READING LIGHTS

FITTED WITH	1 x halogen lamp QR-CBC35 20 W - D68738000
WORK EQUIPMENT	electronic plug-in transformer
CONNECTED LOAD	120 V; 60Hz
MAINS LEAD	approx. 2 m cordset
LUMINAIRE BODY	polycarbonate (PC)
WEIGHT (NET)	approx. 1,2 kg (2.6 lbs)
POWER CONSUMPTION	approx. 25 W
USAGE	rocker switch (I/O)
TECHNOLOGY	single-pole secondary
CLASS OF PROTECTION	II
NORMS	EN 60598-1, EN 60598-2-25
FASTENING	pin (16 mm), rail clamp included
ORDER NUMBER	D13821150 - silver



## LIGHT DISTRIBUTION

## TECHNICAL DRAWING



Dimensions in cm.

