

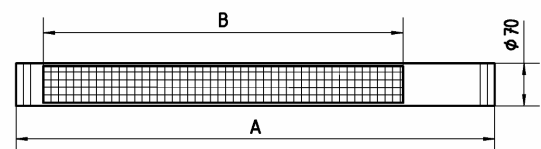
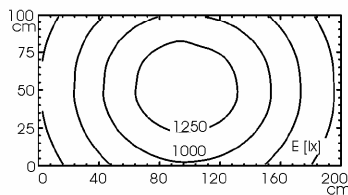
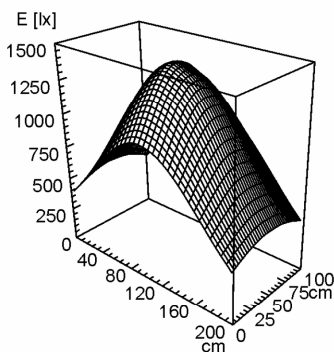
Machine Tube Luminaire



RL70E - 254

connected load	120V; 60Hz
fitted with	2 x fluorescent lamp T5 54 W neutral white 4000 K
work equipment	electronic ballast
mains lead	connecting terminal
design	254
luminaire body	borosilicate glass
material	approx. 5,8 kg (12.8 lbs)
weight (net)	lamp bracket (accessory)
fastening	direct
light distribution	IP 67
system of protection	I
class of protection	1711 mm (67.4")
total length	1177 mm (46.3")
light output	70 mm (2.8")
outside diameter	A with screwed cable gland
article no.	138449001

E_{min}: 409 lx
 E_m: 923 lx
 E_{max}: 1427 lx



measuring conditions: d=100cm