



**fitted with**

**work equipment**  
**connected load**  
**power consumption**  
**system of protection**  
**class of protection**  
**technology**  
**usage**  
**luminaire body**  
**lamp cover**  
**tubular sections**  
**weight (net)**  
**mains lead**

**fastening**

**lens; dimensions**  
**lens; diopters**  
**add-on lens; dimensions**

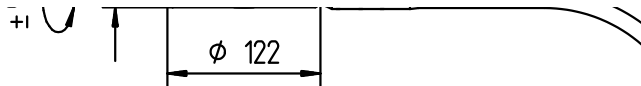
63 x Light-emitting diode  
 light colour neutral white, 3700-4300 K, Color Rendering Index (CRI)=80-89  
 Energy efficiency category A+  
 electronic plug-in transformer  
 100-240V; 50/60Hz  
 approx. 6W  
 IP 20  
 II  
 switchable  
 Touch-LED  
 anodized aluminium  
 acrylic clear  
 steel tube/metal flexible tube, painted, silver metallic  
 approx. 1.1 kg  
 approx. 2.3 m; mains plug  
 CEE 7/XVI  
 NEMA 1-15P  
 screw-down flange, magnetic base (accessory), table clamp (accessory), wall bracket (accessory)  
 Ø 72 mm  
 6  
 not available



CEE 7/XVI



NEMA 1-15P



**illuminance**

measuring conditions: d=15cm

**Em:** 2663 lx  
**Emax:** 5282 lx  
**Emin:** 813 lx

