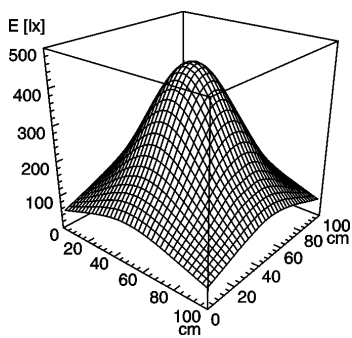


## LED machine luminaire

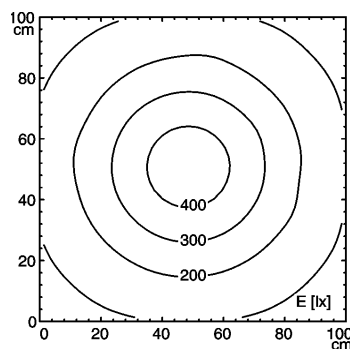


**ONE LED - MVAL 1 S**

|                       |                     |
|-----------------------|---------------------|
| connected load        | 20-28V; DC          |
| fitted with           | 1 x LED lamp 5 W    |
| work equipment        | without             |
| mains lead            | connecting terminal |
| design                | mounted version     |
| luminaire body        |                     |
| material              | aluminium           |
| surface               | untreated           |
| weight (net)          | approx. 0,2 kg      |
| fastening             | screws              |
| usage                 | without switch      |
| lamp cover            | glass screen        |
| glare-free            | prismatic screen    |
| system of protection  | IP 67               |
| class of protection   | III                 |
| colour luminaire body | aluminium           |
| total length          | 134 mm              |
| article no.           | 112887034           |



E<sub>min</sub>: 64 lx  
 E<sub>m</sub>: 204 lx  
 E<sub>max</sub>: 445 lx



measuring conditions: d=50cm

