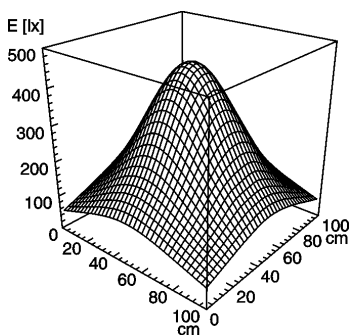


LED machine luminaire

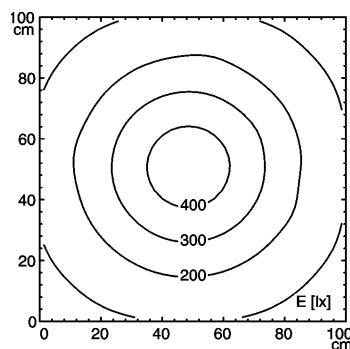


ONE LED - MVAL 1 S

connected load	20-28V; DC
fitted with	1 x LED lamp 5 W
work equipment	without
mains lead	connecting terminal
design	mounted version
luminaire body	aluminium
material	untreated
surface	approx. 0,2 kg
weight (net)	screws
fastening	without switch
usage	acrylic clear
lamp cover	prismatic screen
glare-free	IP 54
system of protection	III
class of protection	aluminium
colour luminaire body	134 mm
total length	luminaire head can be turned in an angle of $\pm 90^\circ$,
special features	112887027
article no.	



E_{min}: 64 lx
 E_m: 204 lx
 E_{max}: 445 lx



measuring conditions: d=50cm

