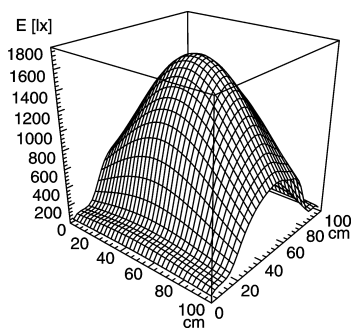


LED machine luminaire

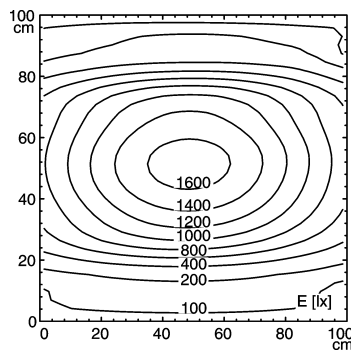


MACH LED - MTAL 4 S

connected load	24 V; 50/60 Hz
fitted with	4 x LED lamp 6 W
work equipment	without
mains lead	approx. 3.0 m (9.8 ft.); with free stranded wires
luminaire body	
material	aluminum
surface	anodized
weight (net)	approx. 0,9 kg (2.0 lbs)
fastening	screws
technology	switchable
usage	without switch
lamp cover	screen; clear
glare-free	without
system of protection	IP 67
class of protection	III
colour luminaire body	aluminum colored anodized
total length	726 mm (approx. 28.6")
article no.	112567037



E_{min}: 83 lx
 E_m: 722 lx
 E_{max}: 1670 lx



measuring conditions: d=50cm

