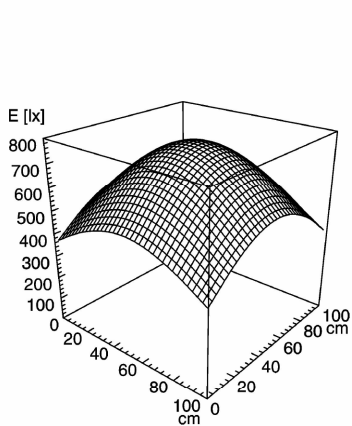


## machine luminaire

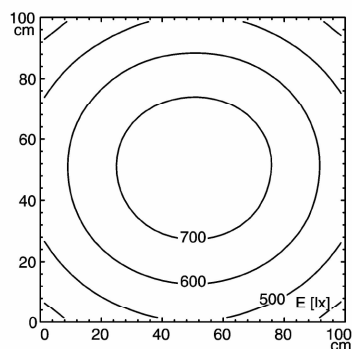


### FLAT TEC - MZA 139 N

connected load	100-250 V; 50/60 Hz
fitted with	1 x fluorescent lamp T5 39 W
work equipment	electronic ballast
mains lead	built-in plug
design	139 N
luminaire body	sectional aluminium
material	anodized
surface	approx. 6,5 kg (14.3 lbs)
weight (net)	screws
fastening	switchable
technology	without switch
usage	glass screen
lamp cover	conic prismatic screen
glare-free	IP 68-1m /69K (68-1m /69K)
system of protection	I
class of protection	aluminium coloured anodized
colour luminaire body	M12 connector plug
special features	112528002
article no.	



E<sub>min</sub>: 404 lx  
 E<sub>m</sub>: 601 lx  
 E<sub>max</sub>: 766 lx



measuring conditions: d=100cm

