

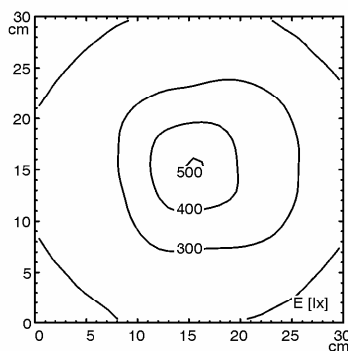
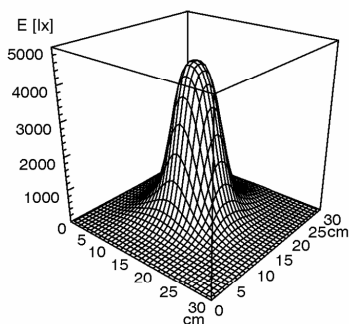
## LED machine luminaire



**ABLTL 1**

connected load	depends on operating device
fitted with	1 x LED lamp 3 W
work equipment	without
mains lead	approx. 20" to 80" expandable cord
luminaire body	
material	aluminium
surface	anodized
tubular sections	
material	flexible metal tube
weight (net)	approx. 0,9 kg (2.0 lbs)
fastening	threaded base
usage	without switch
lamp cover	glass screen
glare-free	without
system of protection	IP 67
class of protection	III
special features	Spot with 25° angle of reflected beam
article no.	112373010

E<sub>min</sub>: 121 lx  
 E<sub>m</sub>: 270 lx  
 E<sub>max</sub>: 502 lx



measuring conditions: d=50cm, l=700mA

