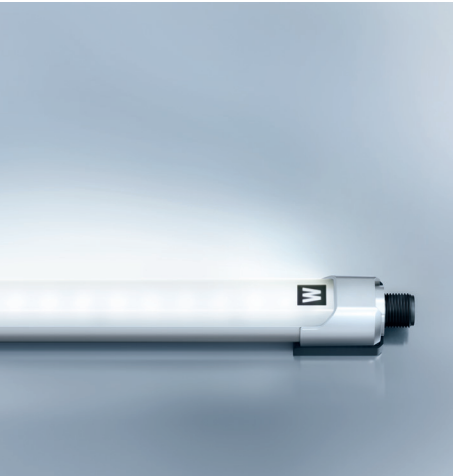
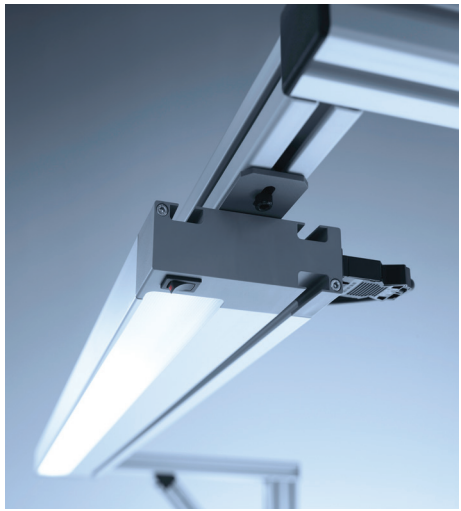
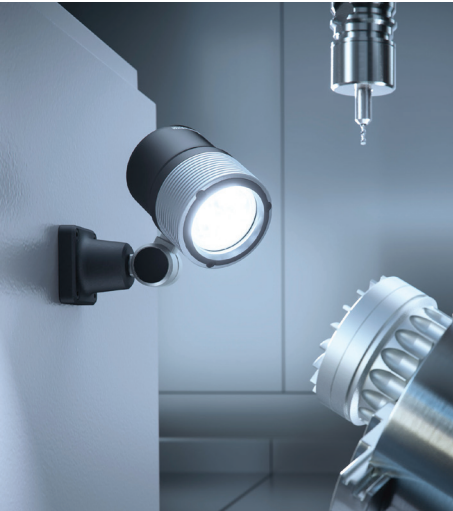


INDUSTRIAL LED HIGHLIGHTS



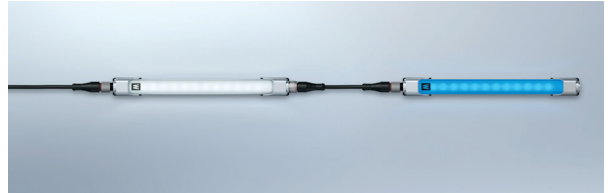
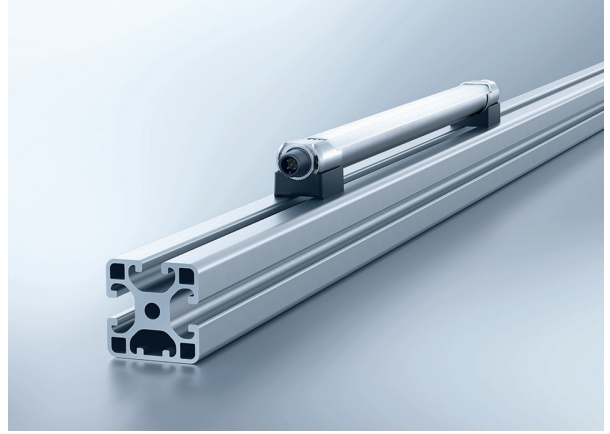
LINURA.edge

HIGH OUTPUT LINEAR LED

- Designed for applications on or inside a machine or enclosure
- Slim design measures less than one inch in diameter
- Strong aluminum profile and PMMA acrylic
- Ten standard lengths
- The unique sealing of lens and side components offer resistance to high ambient temperatures, liquid and dust (IP54)
- Light output of more than 170 lumens per watt, allowing very high light levels from fewer or smaller fixtures
- M12 connection and cord available (sold separately)
- ETL/cETL

LINURA.edge RGB model also features:

- Seven adjustable light colors for status messaging and design effects
- Digital input for powerless switching
- Thru-wiring operation with white lights possible (common actuation of both lights via one single feed line)

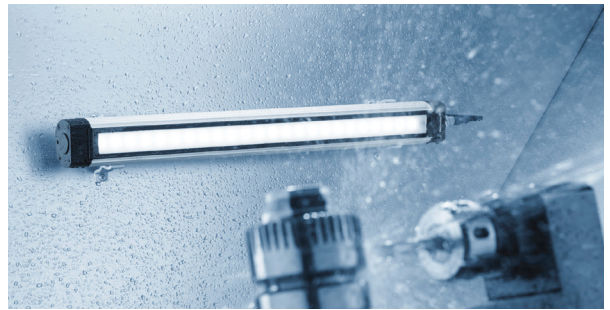


MACH LED PLUS.seventy

MACH LED PLUS.forty

70 MM AND 40 MM HIGH OUTPUT LINEAR LED

- Up to 70% energy savings compared to fluorescent tube luminaires
- Able to withstand extreme ambient heat up to 122°F
- Many lengths and light output options to choose from
- Thru-wire models available for connecting multiple fixtures
- Easy connection via M12 cable assembly (included)
- Various bracket options for simple installation (sold separately)
- Flicker-free without dangerous stroboscopic effect
- IP67 protection against oils, water, lubricants etc.
- Rugged anodized aluminum housing, 4 mm safety glass
- Impervious to mechanical vibration
- 60,000 hours maintenance-free operation
- ETL/cETL



RL70LE

LED MACHINE TOOL TUBE LIGHT

- New LED generation designed to update conventional fluorescent industrial tube lights
- Premium LED materials and technology
- Color temperature: 5000 K for clear, bright vision
- Protective-grade borosilicate glass versions resist coolants, lubricants and other volatile liquids
- Strong polycarbonate option ideal for food industry and outdoor applications
- Clear acrylic is strong for machining and other industrial environments
- IP67 protection against oils, water, lubricants, etc.
- ETL/cETL



ROCIA.focus

VERSATILE LED MACHINE LIGHT

- Double-arm, gooseneck and pivoting head styles
- Protection rating IP65 (arm models) and up to IP67 (pivoting head model)
- Robust anodized aluminum housing
- 3 mm thick safety glass
- 60,000 hour maintenance-free operation
- Precision optics in 10° or 40° beam angles
- Able to operate at 12-40 VDC, 12-28 VAC or 100-240 VAC (for arm models only)
- On/off or continuous dimming capability
- ETL/cETL



ROCIA.planar

TASK & WORKBENCH LIGHT

- Integrated power supply
- Impact resistant cover
- Protection rating up to IP67/ Sealed IP65 housing
- 3D head joint for precise adjustability
- Rubber switch conveniently located on head
- High-resistance coating against heat, oils
- No stroboscopic effect
- No heat generated in direction of the light beam
- ETL/cETL



RAPTOR

VERSATILE LED MACHINE LIGHT

- Robust die-cast aluminum housing
- Several mounting options
- 3 mm thick safety glass
- 100-240 VAC or 22-26 VDC
- Gooseneck or pivoting head models available
- Withstands temperatures up to 104°F
- 50,000 hours of maintenance-free LED service life
- Protection rating IP65 (gooseneck model) and up to IP67 (pivoting head model)
- ETL/cETL



HEAD LED

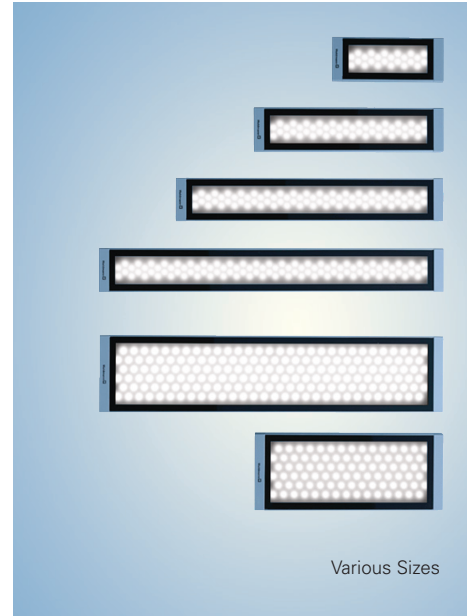
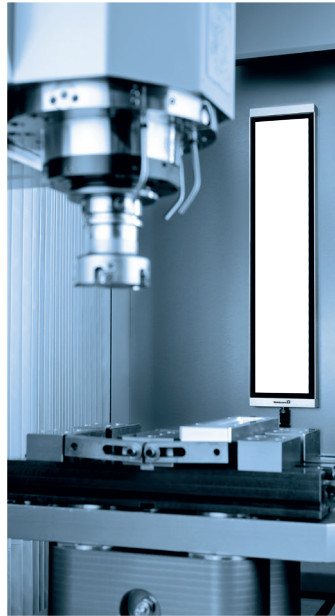
SURFACE MOUNT LED FLOOD

- Small footprint – 1.9" diameter
- Available in 70° or 100° beam angles
- Designed for wide area light distribution
- Rugged anodized aluminum housing
- 16-32 VDC
- 50,000 hours maintenance-free operation
- IP67 protection against oils, water, lubricants, etc.
- ETL/cETL



LUMATRIS HIGH OUTPUT LED

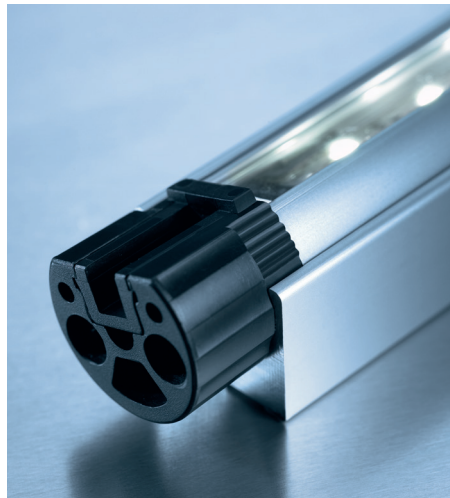
- Six sizes for customized fit
- Easy rear or side connection options via M12 cable assembly (included)
- Surface or flush mounting options
- Narrow beam or wide flood light options
- Suitable for ambient temps up to 122°F
- Protection rating IP68-1m and IP69K in accordance with DIN 40050-9
- Designed for use with coolants and lubricants
- Rugged anodized aluminum housing, 4mm safety glass
- Impervious to mechanical vibration
- 22-26 VDC
- 50,000 hours maintenance-free operation
- ETL/cETL



Various Sizes

SLIM LED COMPACT LINEAR LED

- Small, compact linear housing less than 1" (22 mm) wide
- Five lengths: 7.7", 13.2", 24.3", 35.3", 46.3"
- Adjustable version rotates 45°
- IP67 rated (although not recommended for use with coolants or lubricants)
- Aluminum extruded housing
- 22-29 VDC
- 50,000 hours maintenance-free operation
- ETL/cETL



Fixed Housing

Adjustable Housing

FLAT LED HIGH OUTPUT LED FLOOD

- Slim housing depth of only .8" (20 mm)
- Hardened anodized aluminum housing protects against heat, wear and corrosion
- Surface or flush mounting options
- Precision optics provide 60° beam spread
- High pressure protection (IP69K)
- Designed for use with coolants and lubricants
- 4mm safety glass
- Impervious to mechanical vibration
- 10-40 VDC or 10-30 VAC
- 50,000 hours maintenance-free operation
- ETL/cETL



Flush Mount



Surface Mount

MLD LED MAGNIFIER

- 3.5 diopter (1.88x) magnification
- 6.3-inch diameter magnifying lens made from strong PMMA acrylic
- Ergonomic design with 2D head joint
- Color rendering index (CRI) > 80
- Color temperature: 5000 K
- Continuously dimmable 100% to 10%
- Strong anodized aluminum housing
- Includes table clamp (0 – 2.7 inches)
- ETL/cETL



OMNIVUE LED LED MAGNIFIER

- Magnifying lens tilts independently from the light source
- 3 diopter (1.75X) stadium-style lens
- Lens dimensions 6.4" x 4.1"
- Optional add-x lenses are available
- Two arm lengths available: 35" or 43"
- 120 VAC; includes 11-foot cord and plug-in transformer
- ETL/cETL
- ESD versions available



TEVISIO LED MAGNIFIER

- 6" diameter magnifier with 48 LED surround
- 3.5 diopter (1.88X) or 3.5d + 8d (3X) magnification options
- On/off, dimming and segment switching
- Spring-balanced arm and multi-directional head joint
- 100-240 VAC, 50/60 Hz operation
- 12-foot cord with US plug
- ETL/cETL
- ESD versions available



RING LED LED MAGNIFIER

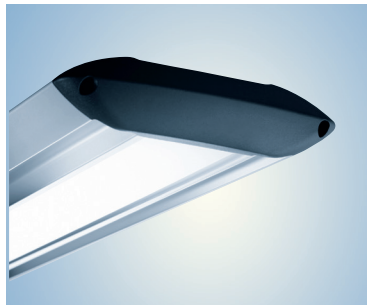
- 63 high-output LEDs for four times more light than traditional fluorescent lights
- Optical-grade 6 diopter (2.3X) lens
- 4.8" diameter head, 2.8" diameter lens
- Touch-switch for on/off operation
- Industrial-grade gooseneck arm – strong even after 20,000 movements
- Plug-in transformer for 100-240 VAC operation



TAMETO

WORKPLACE SYSTEM LUMINAIRE

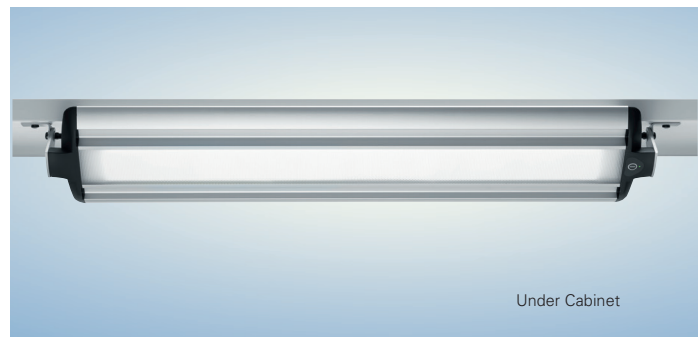
- Latest LED technology and ergonomic optics
- Several sizes and light output selections
- Up to 60% energy savings and 40% higher luminance when compared to conventional fluorescent lamps
- Color temperature: 4000 K
- Glare- and flicker-free for added safety
- Easy access to touch panel for on/off switching
- High lumen output, low power consumption
- Anodized aluminum housing
- 100-240 VAC, 50/60 Hz
- Sealed design for protection from outside elements (IP20)
- 10-foot cord and plug included
- ETL/cETL



TANEO

LED SYSTEM TASK LUMINAIRE

- Three sizes and light output selections
- Spring-balanced arm or system-mounted versions
- Easy access to touch panel for dimming and on/off switching
- 3D head joint for ergonomic ease of use
- Color temperature: 4000 K or 5000 K
- Glare-free satine or clear prismatic lens
- Clip-on magnifier 3.5 diopters (1.88X) available
- 50,000 hours maintenance-free operation
- Anodized aluminum housing
- 100-240 VAC, 50/60 Hz
- ESD versions available
- 10-foot cord included
- ETL/cETL



WLA

WORKPLACE SYSTEM LUMINAIRE

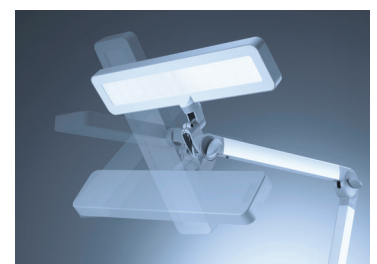
- LED overhead workstation light
- 50,000 hours of maintenance-free operation
- Through-wire capability for daisy-chaining
- Housing of anodized aluminum
- Color temperature: 5000 K
- Superb light quality CRI > 80
- Built-in Wieland GS18/3 connector/socket
- T-Bracket set included
- ETL/cETL



ALD

LED TASK LIGHT

- Functional and easy-to-use tough LED task light
- On/off and dimming switch conveniently located on the head
- Ergonomically friendly for working comfortably
- Ideal for environments requiring lengthy periods of work time
- Wide area illumination and glare-free lens to combat tired eyes
- Color rendering >80
- 5000K color temperature
- Perfectly balanced, anodized aluminum, adjustable double arm
- 3D head-joint enables 180 degrees turn for ease of use
- Ideal for assembly applications, inspection areas or any other industrial workstation



HEADQUARTERS GERMANY
Herbert Waldmann GmbH & Co. KG
Postfach 50 62
78057 VILLINGEN-SCHWENNINGEN

GERMANY
Telephone +49 7720 601-0
Telephone +49 7720 601-100 (Sales)
Fax +49 7720 601-290
www.waldmann.com
sales.germany@waldmann.com

FRANCE
Waldmann Eclairage S.A.S.
Zone Industrielle
Rue de l'Embranchement
67116 REICHSTETT
FRANCE
Telephone +33 3 88 20 95 88
Fax +33 3 88 20 95 68
www.waldmann.com
info-fr@waldmann.com

ITALY
Waldmann Illuminotecnica S.r.l.
Via della Pace, 18 A
20098 SAN GIULIANO MILANESE (MI)
ITALY
Telephone +39 02 98 24 90 24
Fax +39 02 98 24 63 78
www.waldmann.com
info-it@waldmann.com

THE NETHERLANDS
Waldmann B.V.
Lingewei 19
4004 LK TIEL
THE NETHERLANDS
Telephone +31 344 631019
Fax +31 344 627856
www.waldmann.com
info-nl@waldmann.com

AUSTRIA
Waldmann Lichttechnik Ges.m.b.H.
Gewerbepark Wagram 7
4061 PASCHING/LINZ
AUSTRIA
Telephone +43 7229 67400
Fax +43 7229 67444
www.waldmann.com
info-at@waldmann.com

SWEDEN
Waldmann Ljusteknik AB
Skebokvarnsvägen 370
124 50 BANDHAGEN
SWEDEN
Telephone +46 8 990 350
Fax +46 8 991 609
www.waldmann.com
info-se@waldmann.com

SWITZERLAND
Waldmann Lichttechnik GmbH
Benkenstrasse 57
5024 KÜTTIGEN
SWITZERLAND
Telephone +41 62 839 1212
Fax +41 62 839 1299
www.waldmann.com
info-ch@waldmann.com

UNITED KINGDOM
Waldmann Lighting Ltd.
10 Millfield House
Croxley Green Business Park
WATFORD WD18 8Y
Telephone +44 1923 800030
Fax +44 1923 800016
www.waldmann.com
E-Mail info-uk@waldmann.com

USA
Waldmann Lighting Company
9 W. Century Drive
WHEELING, ILLINOIS 60090
USA
Telephone +1 847 520 1060
Fax +1 847 520 1730
www.waldmannlighting.com
waldmann@waldmannlighting.com

CHINA
Waldmann Lighting (Shanghai) Co. Ltd.
199 Changjian Road, Baoshan
SHANGHAI, PRC 200949
Telephone +86 21 5169-1799
Fax +86 21 3385-0032
www.waldmann.com
E-Mail info-cn@waldmann.com

SINGAPORE
Waldmann Lighting Singapore Pte. Ltd.
77A Neil Road
SINGAPORE 088903
Telephone +65 6275 8300
Fax +65 6275 8377
www.waldmann.com
E-Mail sales-sg@waldmann.com

