

**INDUSTRIAL LED HIGHLIGHTS**



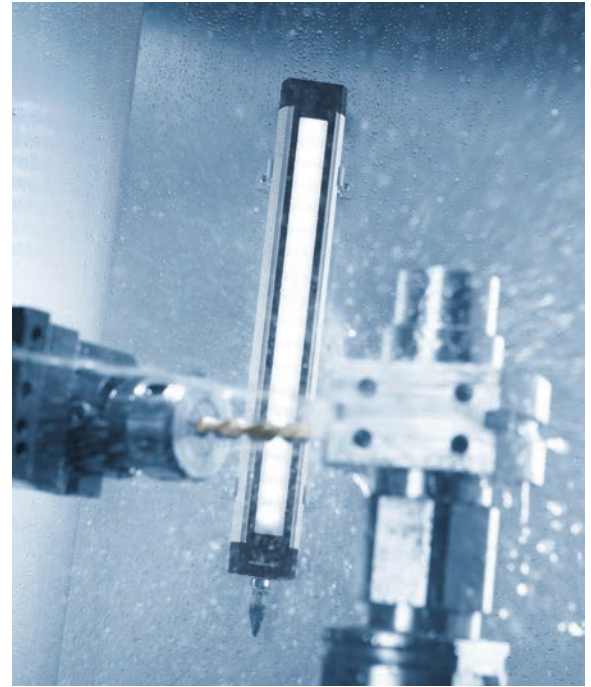
## MACH LED PLUS.seventy

## MACH LED PLUS.forty

### 70 MM AND 40 MM HIGH OUTPUT LINEAR LED

- Rugged anodized aluminum housing with 4mm safety glass
- Up to 70% energy savings compared to fluorescent tube luminaires
- Able to withstand extreme ambient heat up to 122°F
- Many lengths and light output options to choose from
- Thru-wire models available for connecting multiple fixtures
- Easy connection via M12 cable assembly (included)
- Various bracket options for simple installation (sold separately)
- Flicker-free without dangerous stroboscopic effect
- Impervious to mechanical vibration
- Color temperature: 5000K for clear, bright vision
- New! RGB+W variants with 7 controllable colors\*
- 60,000 hours maintenance-free operation
- 100-240V AC or 24V DC
- IP67 protection against oils, water, lubricants, etc.
- ETL/cETL

\*MACH LED PLUS.forty only



## RL70LE

### LED MACHINE TOOL TUBE LIGHT

- New LED generation designed to update conventional fluorescent industrial tube lights
- Protective-grade borosilicate glass versions resist coolants, lubricants and other volatile liquids
- Strong polycarbonate option ideal for food industry and outdoor applications
- Color temperature: 5000K for clear, bright vision
- 50,000 hours maintenance-free operation
- 22-26V DC or 120-277V DC
- IP67 protection against oils, water, lubricants, etc.
- ETL/cETL



## LINURA.edge

### HIGH OUTPUT LINEAR LED

- Designed for applications on or inside a machine or enclosure
- Slim design measures less than one inch in diameter
- Ten standard lengths
- Strong aluminum profile and PMMA acrylic
- Thru-wire models available for connecting multiple fixtures
- The unique sealing of lens and side components offer resistance to high ambient temperatures
- Light output of more than 170 lumens per watt, allowing very high light levels from fewer or smaller fixtures
- M12 connection and cord available (sold separately)
- Mounting brackets included
- Color temperature: 5000K for clear, bright vision
- 60,000 hours maintenance-free operation
- 22-26V DC
- IP54 for liquid and dust
- ETL/cETL



#### LINURA.edge RGB model also features:

- Seven adjustable light colors for status messaging and design effects
- Digital input for powerless switching
- Thru-wiring operation with white lights possible (common actuation of both lights via one single feed line)

## ROCIA.focus

### VERSATILE LED MACHINE LIGHT

- Robust anodized aluminum housing with 3mm thick safety glass
- Double-arm, gooseneck, and pivoting head styles
- Precision optics in 10° or 40° beam angles
- Color temperature: 5000K for clear, bright vision
- 60,000 hours maintenance-free operation
- 12-40V DC, 12-28V AC or 100-240V AC (for arm models only)
- Protection rating IP65 (arm models) and up to IP67 (pivoting head model)
- ETL/cETL



## ROCIA.planar

### TASK & WORKBENCH LIGHT

- Robust aluminum housing with impact resistant cover
- 3D head joint for precise adjustability
- Rubber switch conveniently located on head
- High-resistance coating against heat and oils
- Color temperature: 5000K for clear, bright vision
- 60,000 hours maintenance-free operation
- 100-240V AC
- 10-foot cord and plug included
- Protection rating up to IP67/ Sealed IP65 housing
- ETL/cETL



## RAPTOR

### VERSATILE LED MACHINE LIGHT

- Robust die-cast aluminum housing with 3mm thick safety glass
- Gooseneck or pivoting head models available
- Precision optics in 10° or 30° beam angles
- Color temperature: 5000K for clear, bright vision
- 50,000 hours maintenance-free operation
- 100-240V AC or 22-26V DC
- Protection rating IP65 (gooseneck model) and up to IP67 (pivoting head model)
- ETL/cETL



## HEAD LED

### SURFACE MOUNT LED FLOOD

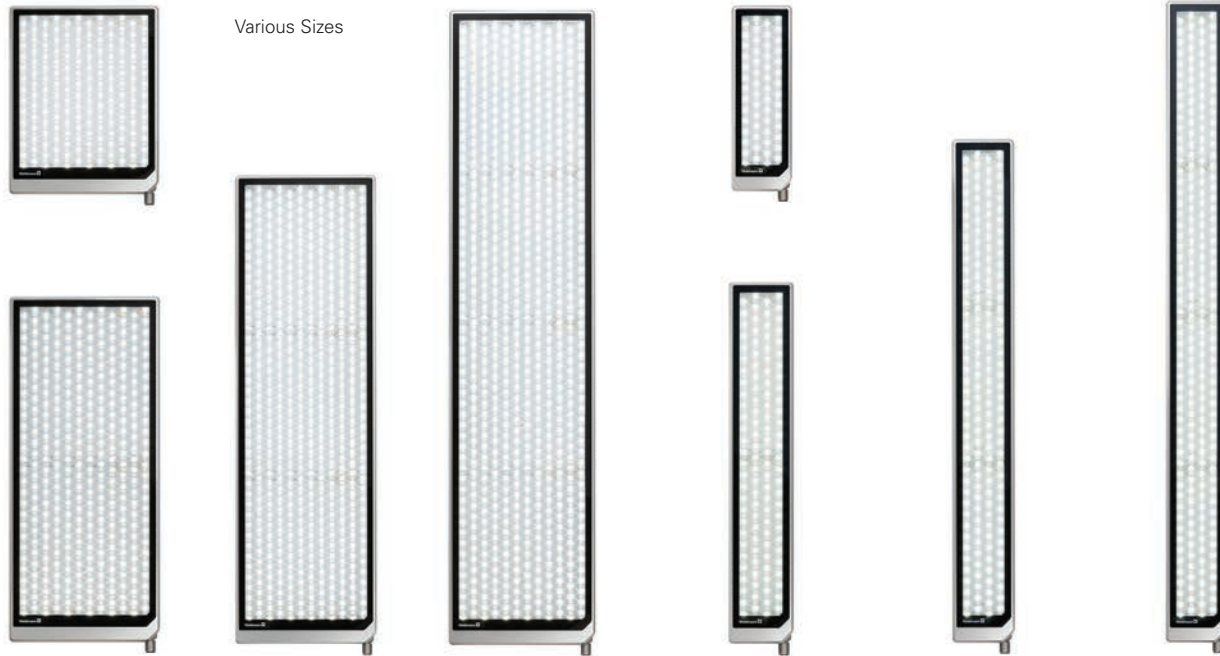
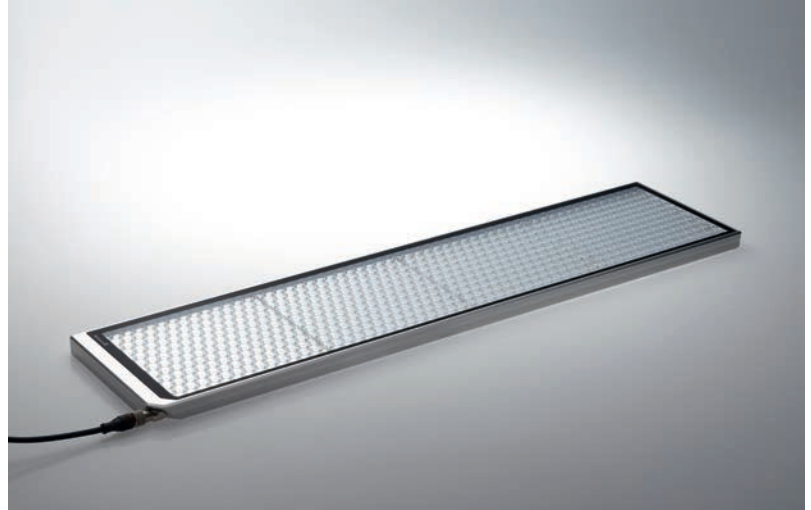
- Small footprint – 1.9" diameter by 0.9"
- Available in 70° or 100° beam angles
- Rugged anodized aluminum housing with 4mm safety glass
- Color temperature: 5600K for clear, bright vision
- 50,000 hours maintenance-free operation
- 16-32V DC
- IP67 protection against oils, water, lubricants, etc.
- ETL/cETL



## ACURIA

### HIGH OUTPUT LED

- Protection rating IP67
- Designed for use with coolants and lubricants
- Rugged anodized aluminum housing with 4mm thick safety glass
- Multiple sizes for customized fit
- Impervious to mechanical vibration
- Rotatable connector
- Suitable for ambient temps up to 122°F
- Color temperature: 5000K for clear, bright vision
- 22-26V DC
- 60,000 hours maintenance-free operation
- Surface or flush mounting options
- 90° beam angle
- UGR rating:  $\leq 22$
- Digital inputs for on/off and step dimming
- ETL/cETL



## FLAT LED

### HIGH OUTPUT LED FLOOD

- Hardened anodized aluminum housing with 4mm safety glass
- Slim housing depth of only .8"
- Designed for use with coolants and lubricants
- Impervious to mechanical vibration
- Surface or flush mounting options
- Precision optics provide 60° beam spread
- Color temperature: 6500K for clear, bright vision
- 50,000 hours maintenance-free operation
- 10-40V DC or 10-30V AC
- IP67 protection against oils, water, lubricants, etc.
- ETL/cETL



## MLD

### LED MAGNIFIER

- 3.5 diopter (1.88x) magnification
- 6.3-inch diameter magnifying lens made from strong PMMA acrylic
- Ergonomic design with 2D head joint
- Continuously dimmable 100% to 10%
- Strong anodized aluminum housing
- 31" arm length
- Color temperature: 5000K
- 50,000 hours maintenance-free operation
- 100-240V AC



- 10-foot cord with US plug
- IP20 rated
- ETL/cETL

## OMNIVUE LED

### LED MAGNIFIER

- 3 diopter (1.75X) stadium-style lens
- Lens dimensions 6.4" x 4.1"
- Magnifying lens tilts independently from the light source
- Optional add-x lenses are available
- Two arm lengths available: 35" or 43"
- Color temperature: 5000K
- 50,000 hours maintenance-free operation
- 120V AC
- 11-foot cord with US plug
- IP20 rated
- ETL/cETL



## TEVISIO

### LED MAGNIFIER

- 3.5 diopter (1.88X) or 3.5d+8d (3X) magnification options
- 6.3" diameter wide angle glass magnifier
- On/off, dimming, and segment switching
- Continuously dimmable 100% to 10%
- Spring-balanced arm and multi-directional head joint
- Two arm lengths available: 31" or 39"
- Color temperature: 5000K
- 50,000 hours maintenance-free operation
- 100-240V AC
- 11-foot cord with US plug
- IP20 rated
- ETL/cETL



## RING LED

### LED MAGNIFIER

- Optical-grade 6 diopter (2.3X) lens
- 4.8" diameter head, 2.8" diameter lens
- Industrial-grade gooseneck arm – strong even after 20,000 movements
- Color temperature: 4000K
- 50,000 hours maintenance-free operation
- 100-240V AC
- 7.5-foot cord with US plug
- IP20 rated
- ETL/cETL



## TAMETO

### WORKPLACE SYSTEM LUMINAIRE

- Anodized aluminum housing
- LED technology and ergonomic optics
- Three lengths – 25.8", 37.6", 49.5"
- Up to 60% energy savings and 40% higher luminance when compared to conventional fluorescent lamps
- Glare- and flicker-free for added safety
- Easy access to touch panel for on/off switching
- Color temperature: 4000K
- 50,000 hours maintenance-free operation
- 100-240V AC
- 10-foot cord and plug included
- IP20 rated
- ETL/cETL



Fixed

## TANEO

### LED SYSTEM TASK LUMINAIRE

- Anodized aluminum housing
- Lengths – Arm 8.6", 15.7", 22.7"; Bench 14.2", 21.2"
- Spring-balanced arm or system-mounted versions
- 3D head joint for ergonomic ease of use
- Glare-free satine or clear prismatic lens
- Clip-on magnifier 3.5 diopters (1.88X) available
- Easy access to touch panel for dimming and on/off switching
- Standard color temperatures: 4000K or 5000K
- Optional tunable white (switch between 3000K, 4000K, 5000K and 6500K) or full spectrum 5000K available\*
- 50,000 hours maintenance-free operation
- 100-240V AC
- 10-foot cord and plug included
- IP20 rated
- ETL/cETL

\*Arm model only



Articulating Arm



Various Sizes



Under Cabinet

## WLA

### LED BENCH SYSTEM LIGHT

- Anodized aluminum housing
- LED overhead workstation light
- Four lengths – 17.7", 35.4", 47.2", 59"
- Through-wire capability for daisy-chaining
- Housing of anodized aluminum
- Built-in Wieland GS18/3 connector/socket
- T-Bracket set included
- Color temperature: 5000K
- 50,000 hours maintenance-free operation
- 120-240V AC
- IP20 rated
- ETL/cETL



## ALD

### LED TASK LIGHT

- Anodized aluminum housing
- Functional and easy-to-use tough LED task light
- 3D head-joint enables 180 degrees turn for ease of use
- Ergonomically friendly for working comfortably
- Wide area illumination and glare-free lens to combat tired eyes
- On/off and dimming switch conveniently located on the head
- Color temperature: 5000K
- 50,000 hours maintenance-free operation
- 120-240V AC
- IP20 rated
- ETL/cETL



HEADQUARTERS GERMANY  
Herbert Waldmann GmbH & Co. KG  
Peter - Henlein - Straße 5  
78056 VILLINGEN-SCHWENNINGEN  
GERMANY  
Telephone + 49 7720 601 - 0  
Telephone + 49 7720 601 - 200 (Sales)  
Fax + 49 7720 601 - 290  
www.waldmann.com  
sales.germany@waldmann.com

AUSTRIA  
Waldmann Lichttechnik Ges.m.b.H.  
Gewerbepark Wagram 7  
4061 PASCHING / LINZ  
AUSTRIA  
Telephone + 43 7229 67400  
Fax + 43 7229 67444  
www.waldmann.com  
info-at@waldmann.com

CHINA  
Waldmann Lighting (Shanghai) Co., Ltd.  
Part A11a, No. Five Normative Workshop  
199 Changjian Road, Baoshan  
SHANGHAI, P.R.C. 200949  
CHINA  
Telephone + 86 21 5169 1799  
Fax + 86 21 3385 0032  
www.waldmann.com.cn  
info-cn@waldmann.com

FRANCE  
Waldmann Eclairage S.A.S.  
Zone Industrielle  
Rue de l'Embranchement  
67116 REICHSTETT  
FRANCE  
Telephone + 33 3 88 20 95 88  
Fax + 33 3 88 20 95 68  
www.waldmann.com  
info-fr@waldmann.com

ITALY  
Waldmann Illuminotecnica S.r.l.  
Via della Pace, 18 A  
20098 SAN GIULIANO MILANESE (MI)  
ITALY  
Telephone + 39 02 98 24 90 24  
Fax + 39 02 98 24 63 78  
www.waldmann.com  
info-it@waldmann.com

THE NETHERLANDS  
Waldmann B.V.  
Lingewei 19  
4004 LK TIEL  
THE NETHERLANDS  
Telephone + 31 344 631019  
Fax + 31 344 627856  
www.waldmann.com  
info-nl@waldmann.com

SCANDINAVIA  
Waldmann Ljusteknik AB  
Botvid Business Center  
Fågelviksvägen 9  
SE-145 53 Norsborg  
SWEDEN  
Telephone + 46 8 990 350  
Fax + 46 8 991 609  
www.waldmann.com  
info-se@waldmann.com

SINGAPORE  
Waldmann Lighting Singapore Pte. Ltd.  
77A Neil Road  
SINGAPORE 088903  
SINGAPORE  
Telephone + 65 6275 8300  
Fax + 65 6275 8377  
www.waldmann.com  
sales-sg@waldmann.com

SWITZERLAND  
Waldmann Lichttechnik GmbH  
Benkenstrasse 57  
5024 KÜTTIGEN  
SWITZERLAND  
Telephone + 41 62 839 1212  
Fax + 41 62 839 1299  
www.waldmann.com  
info-ch@waldmann.com

USA  
Waldmann Lighting Company  
9 Century Drive  
WHEELING, ILLINOIS 60090  
USA  
Telephone + 1 847 520 1060  
Fax + 1 847 520 1730  
www.waldmannlighting.com  
waldmann@waldmannlighting.com