
SUPPORT ARM SYSTEMS
QUALITY AND PRECISION



SUPPORT ARM SYSTEMS. IMPLEMENTING YOUR PROJECT.

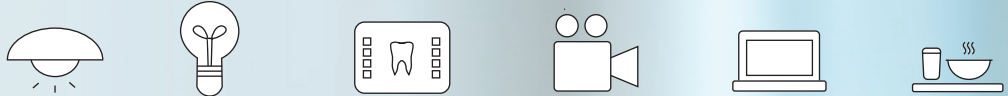
You have the device.

We have the right support arm system.

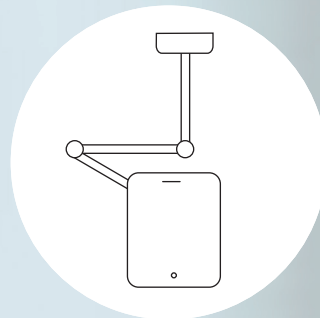
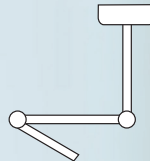
Waldmann's complete line gooseneck and double-arm systems are designed to hold OEM industrial and medical devices such as digital cameras, flat screen computers, splash guards, instruments, tools, microscopes, lasers and other equipment.

Manufacturing your own arm solutions can be time consuming and expensive. Maximize efficiency by teaming up with Waldmann. Through custom engineering and specialty mounting options, our arms become a seamless, natural extension of your product.

Applications



Waldmann arm system



Connecting the new product

TENO. SUPPORT ARM SYSTEM.

An elegant support arm system

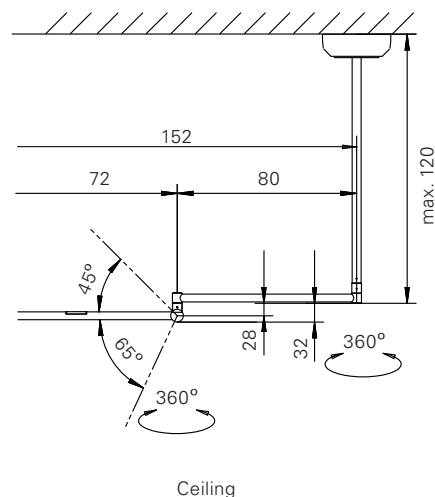
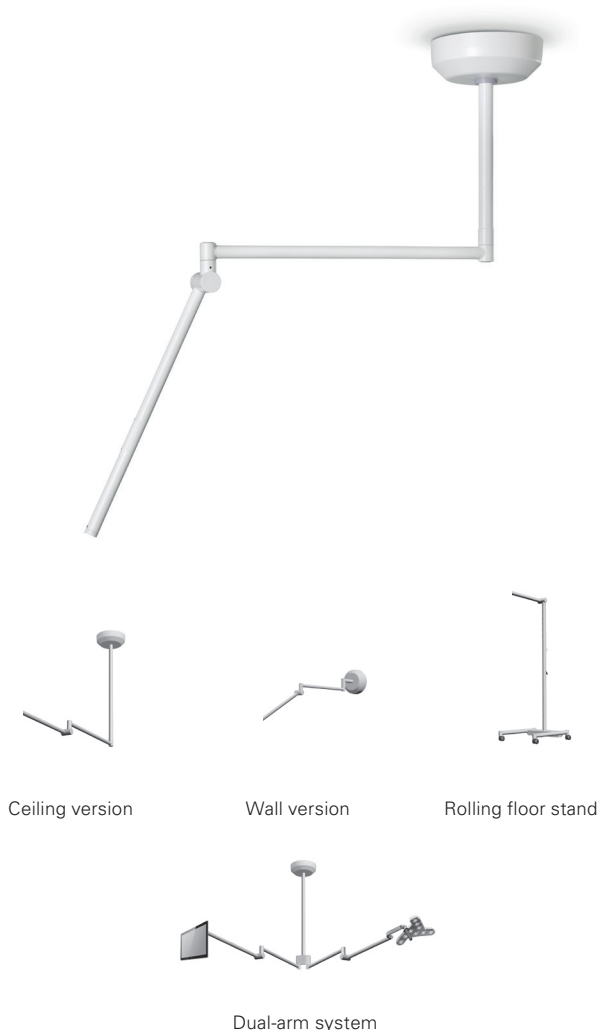
The individually adjustable spring-balanced arm allows optimal support – regardless of the load. TENO gives optimal movement with a 60-inch reach, 360° rotational joints and a +45°/-65° angle range. Also available in a dual-arm version.

TENO support arm system features

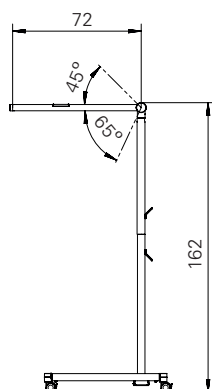
- Positioning with less effort and more accuracy
- Application-specific load up to 30 nm
- Easy installation
- Fastens to wall, ceiling or roller stand
- Dual-arm system available
- Ondal-compatible connection*

TENO support arm system technical

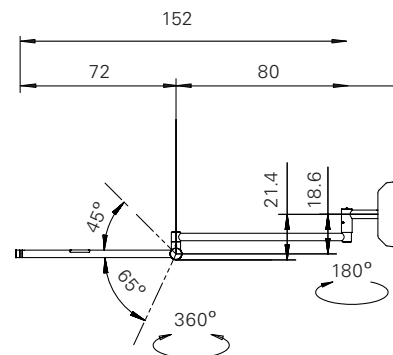
Length of spring-balanced arm to center of gravity	Load at center of gravity (N)	Cable diameter max.
31.5" (800mm)	40	0.31" (8mm)
35.4" (900mm)	35	0.31" (8mm)
39.4" (1000mm)	30	0.31" (8mm)
43.3" (1100mm)	25	0.31" (8mm)



Ceiling



Mobile



Wall

measurements in millimeters

VISO. SUPPORT ARM SYSTEM.

The proven support arm system

Long-lasting, safe and economical. The VISO support system is equipped with an integrated converter. The premium aluminum arm has a very durable, spring-balanced friction-joint for effortless positioning and locking.

ViSO support arm system features

- Easy to position
- Multiple spring-balanced joints
- Application-specific load up to 10 nm
- Easy installation
- Fastens to wall, ceiling or roller stand
- Individual fastening adapters*

*On request



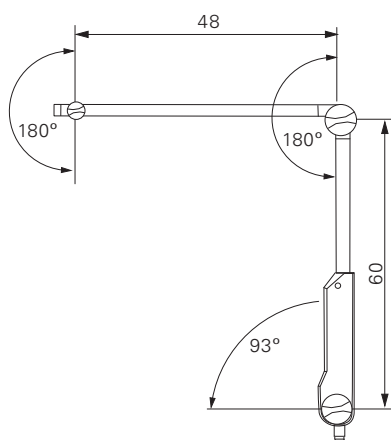
Ceiling version



Pin version

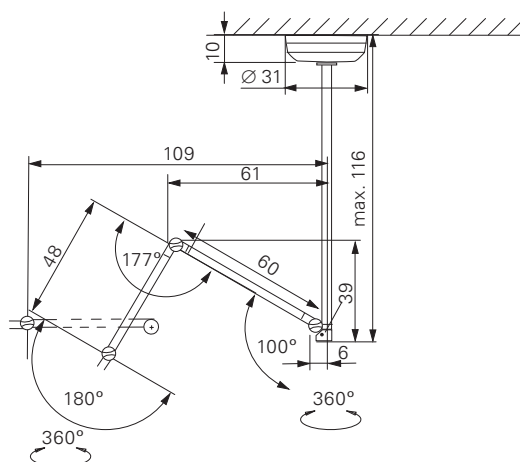


Rolling floor stand



Pin version

measurements in millimeters



Ceiling version

Support arm systems –

Examples of customer-specific applications

For many years, we have worked with our OEM customers to assist in developing robust equipment for the healthcare community. Together, we work diligently to provide the most efficient and user-friendly arm solutions to support the important work these systems do.



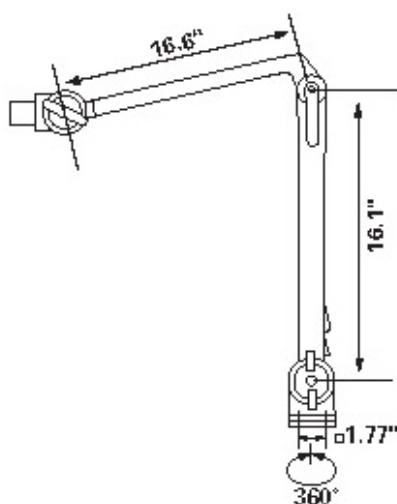
FGL. SUPPORT ARM SYSTEM.

The proven support arm system

This top-quality proven arm system is a logical, yet economical design that successfully integrates into various projects. Through custom engineering and specialty mounting options, our arm becomes a seamless, natural extension of your product.



measurements in millimeters



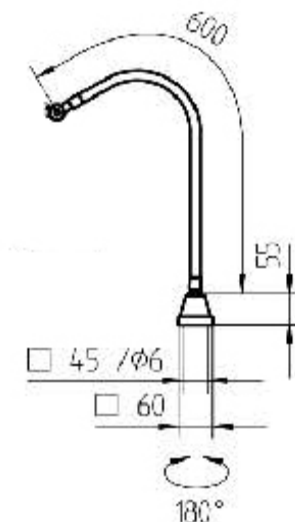
FGL support system features

- Spring arm
- Also available without gas spring (as shown above). Standard Reach: 32"
- Weight Capacity: 5 lbs.
- Includes 4-hole mounting base
- Pattern for horizontal surfaces.

SPL. SUPPORT ARM SYSTEM.

SPL support system features:

- Gooseneck Arm
- Lightweight flexible applications
- Weight Capacity < 1 lb



measurements in millimeters



MLX. SUPPORT ARM SYSTEM.

MLX support arm system features

- Standard Reach: 32"
- Weight Capacity: 2 lbs.
- Top joint best for pin type fixation of device.
- Articulation points can be rendered flexible or locked into place.
- A universal base is available for horizontal and vertical mounting.
- Bolt/tamper proof configuration is available.
- Custom arm lengths are available.



LDX. SUPPORT ARM SYSTEM.

The ergonomic support arm system

The LDX perfectly balanced arm is flexibly adjustable and features a 3D head joint.

LDX support arm system features

- Housing made of anodized aluminum and grey plastic
- Ergonomic arm-mounting technology with 3D head joint
- Weight Capacity: 2 lbs.



ADJUSTOMAX. HOSE HOLDER SYSTEM.

The secure hose holder system

The ADJUSTOMAX – AM 2L light hose holder system is distinctive for its long-lasting friction joints and premium materials. With invasive ventilation, a stable hold of the tubing system vital. In such situations, the established hose holder system provides absolute safety.

ADJUSTOMAX – AM 2L hose holder system features:

- Matte chromed, anodized aluminum
- Torque joint relief
- Pin Ø 16 mm-W
- Mounts to wall, ceiling or rolling floor stand
- Included: double ball bracket, 6 cable brackets, 6 hose holders



VMLX. SUPPORT ARM SYSTEM.

VMLX support arm for ventilators

Retaining arm system is used to hold ventilation tubes, infusion tubes, etc.

VMLX ventilator support arm system features

White with friction joints continuously adjustable

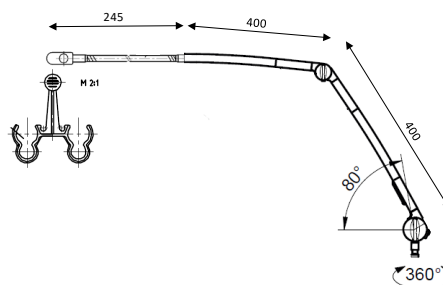
- with tension spring
- without tension spring



VMLX support arm system features:

- Available with or without tension spring
- Arm Reach: 39.4in.
- Weight Capacity: 2.2. lbs (with spring-loaded model)

*Special lengths upon request



MOUNTING OPTIONS

Table Clamp

Material Steel/polyresin
Span 0-2.75"
Weight 1 lb
Color Black
Part # D14228000



Rolling Floor Stand

Material Steel/plastic
Color Gray
Dimensions 39" height X Ø 28"
Weight 16.5 lbs
Part # D15 595 000



Wall Mount

Material Polyamide
Weight .5 lb
Color White
Part # D13269000



Rail Clamp*

Material Anodized aluminum
Span 0-2.75"
Part # D13269000



HEADQUARTERS GERMANY

Herbert Waldmann GmbH & Co. KG
Peter-Henlein-Straße 5
78056 VILLINGEN-SCHWENNINGEN
GERMANY
Telephone +49 7720 601- 0
Telephone +49 7720 601- 100 (Sales)
Fax +49 7720 601- 290
www.waldmann.com
sales.germany@waldmann.com

FRANCE

Waldmann Eclairage S.A.S.
Zone Industrielle
Rue de l'Embranchement
67116 REICHSTETT
FRANCE
Telephone +33 3 88 20 95 88
Fax +33 3 88 20 95 68
www.waldmann.com
info-fr@waldmann.com

ITALY

Waldmann Illuminotecnica S.r.l.
Via della Pace, 18 A
20098 SAN GIULIANO MILANESE (MI)
ITALY
Telephone +39 02 98 24 90 24
Fax +39 02 98 24 63 78
www.waldmann.com
info-it@waldmann.com

THE NETHERLANDS

Waldmann B.V.
Lingewei 19
4004 LK TIEL
THE NETHERLANDS
Telephone +31 344 631019
Fax +31 344 627856
www.waldmann.com
info-nl@waldmann.com

AUSTRIA

Waldmann Lichttechnik Ges.m.b.H.
Gewerbepark Wagram 7
4061 PASCHING/LINZ
AUSTRIA
Telephone +43 7229 67400
Fax +43 7229 67444
www.waldmann.com
info-at@waldmann.com

SCANDINAVIA

Waldmann Ljusteknik AB
Skebokvarnsvägen 370
124 50 BANDHAGEN
SWEDEN
Telephone +46 8 990 350
Fax +46 8 991 609
www.waldmann.com
info-se@waldmann.com

SWITZERLAND

Waldmann Lichttechnik GmbH
Benkenstrasse 57
5024 KÜTTIGEN
SWITZERLAND
Telephone +41 62 839 1212
Fax +41 62 839 1299
www.waldmann.com
info-ch@waldmann.com

UNITED KINGDOM

Waldmann Lighting Ltd.
10 Millfield House
Croxley Park
WATFORD WD18 8YX
UNITED KINGDOM
Telephone +44 1923 800030
Fax +44 1923 800016
www.waldmann.com
info-uk@waldmann.com

USA

Waldmann Lighting Company
9 W. Century Drive
WHEELING, ILLINOIS 60090
USA
Telephone +1 847 520 1060
Fax +1 847 520 1730
www.waldmannlighting.com
waldmann@waldmannlighting.com

CHINA

Waldmann Lighting (Shanghai) Co., Ltd.
Part A11a, No. Five Normative Workshop
199 Changjian Road, Baoshan
SHANGHAI, P.R.C. 200949
CHINA
Telephone +86 21 5169 1799
Fax +86 21 3385 0032
www.waldmann.com.cn
info-cn@waldmann.com

SINGAPORE

Waldmann Lighting Singapore Pte. Ltd. 77A
Neil Road
SINGAPORE 088903
SINGAPORE
Telephone +65 6275 8300
Fax +65 6275 8377
www.waldmann.com
sales-sg@waldmann.com

Center of Expertise for Healthcare:

DERUNGS LICHT AG

Hofmattstrasse 12
9200 Gossau
Switzerland
Tel. +41 71 388 11 66
Fax +41 71 388 11 77
www.derungslicht.com
mailbox@derungslicht.com

Derungs Licht AG is a
member of the Waldmann Group.

