

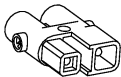


fitted with

work equipment  
connected load  
power consumption  
luminous flux  
luminous efficacy  
light distribution  
light colour  
color rendering index (CRI)  
system of protection  
class of protection  
usage  
luminaire body  
weight (net)  
mains supply

fastening  
dimension  
light output  
outside diameter  
side part  
special features

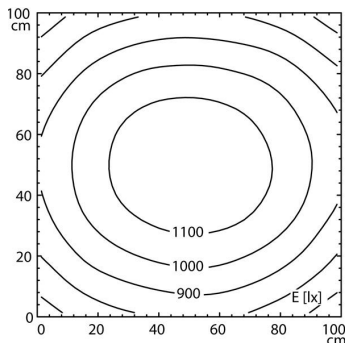
LED  
Energy efficiency category A+  
without  
22-26 V; DC  
approx. 50 W  
approx. 3800 lm  
approx. 76 lm/W  
direct  
neutral white, approx. 5000 K  
> 80  
IP 67  
III  
external  
acrylic  
approx. 3.1 kg, 6.83 lb  
built-in plug  
ST16/2 BS  
pipe clamp (accessory)  
A=1210 mm, 47.6 in  
D=1156 mm, 45.5 in  
70 mm, 2.75 in  
A with screwed cable gland  
light forming, through-wired



ST16/2 BS

illuminance

distance: 100 cm  
Em: 968 lx  
Emax: 1190 lx  
Emin: 697 lx



luminous intensity

