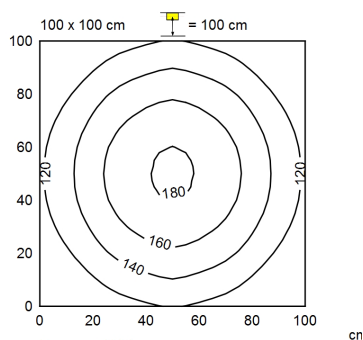




QUICKON 3

fitted with	LED
work equipment	without
connected load	16 - 32 V, DC
power consumption	approx. 4.5 W
luminous flux	approx. 480 lm
luminous efficiency	approx. 131 lm/W
light distribution	direct
light color	approx. 5400K
color rendering index (CRI)	> 80
direct ratio	approx. 93%
beam angle	120°
system of protection	IP 67
class of protection	III
chromaticity tolerance LED	< 5 SDCM
UGR class (4H 8H; EN 12464-1)	≤ 25
luminance (L65)	≤ 8,000 cd/m ²
glare control	without
technology	switchable
usage	external
luminaire housing	polycarbonate (PC), clear
light source cover	polycarbonate (PC)
weight (net)	approx. 0.4 kg (0.9 lbs)
mains lead	built-in plug; QUICKON 3
fastening	lamp bracket (accessory)
dimension	A = 368 mm, 14.5 in
light opening	D = 307 mm, 12.1 in
outside diameter	40 mm, 1.57 in
side part	D with plug
temperature range	-25°C - 40°C

light distribution



Em: 138 lx
 Emax: 181 lx
 Emin: 94 lx

