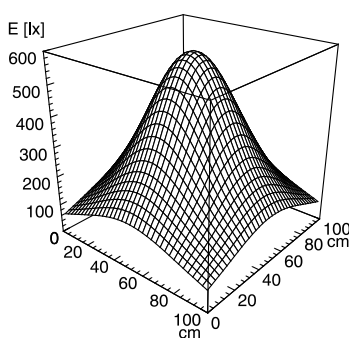


## LED machine luminaire

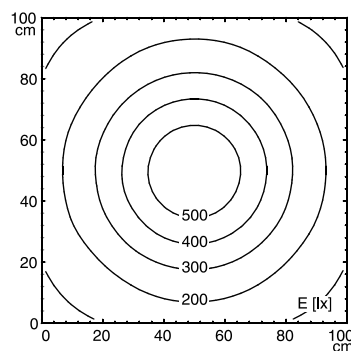


### ONE LED - MVAL 1 S

FITTED WITH	1 x Light-emitting diode 6 W
WORK EQUIPMENT	without
CONNECTED LOAD	20-28V, DC
POWER CONSUMPTION	approx. 5 W
SYSTEM OF PROTECTION	IP 54
CLASS OF PROTECTION	III
USAGE	without switch
LUMINAIRE BODY	
MATERIAL	aluminium
SURFACE	untreated
COLOUR LUMINAIRE BODY	aluminium
LAMP COVER	acrylic clear
WEIGHT (NET)	approx. 0.2 kg
MAINS LEAD	connecting terminal
DESIGN	mounted version
FASTENING	screws
TOTAL LENGTH	134 mm
GLARE-FREE	prismatic screen
SPECIAL FEATURES	luminaire head can be turned in an angle of $\pm 90^\circ$
ARTICLE NO.	112887027-00076050



E<sub>min</sub>: 83 lx  
 E<sub>m</sub>: 261 lx  
 E<sub>max</sub>: 571 lx



measuring conditions: d=50cm, BIN=N1

