



<p>fitted with work equipment connected load power consumption luminous flux luminous efficacy light distribution Beam Angle light color color rendering index (CRI) system of protection class of protection technology usage luminaire body lamp cover weight (net) mains supply</p> <p>design fastening dimension special features</p>	<p>LED without 20-28V; DC approx. 16 W approx. 1680 lm approx. 105 lm/W direct, wide-angled beam 90°/100° neutral white, approx. 5000 K &gt; 80 IP 67 III switchable external aluminium, anodized, aluminium colored anodized screen, clear approx. 0.8 kg (1.76 lb) built-in plug M12 4-pole A-coded mounted version L-angle, clamp A=540 mm (21.3 in) angle of illumination 90°, through-wired</p>
---	--

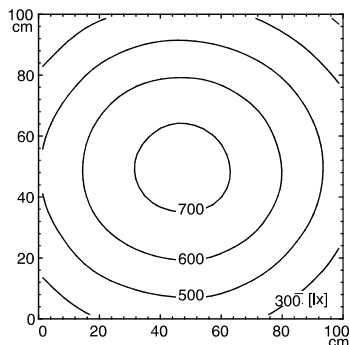


M12 4-pole A-coded

**illuminance**

Comment: d=100cm

Em: 541 lx  
Emax: 732 lx  
Emin: 326 lx



**luminous intensity**

